

Somerset County

Division of Economic and Demographic Research

Office of Research & Information

New Jersey Department of Labor and Workforce Development

February 2026

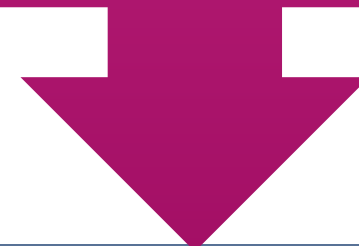


TABLE OF CONTENTS

Who Are We?	3
Purpose and Highlights	4
Demographic and Housing Characteristics	5
Economy	12
Job Postings	25
Takeaways	38
2025-2026 NJDOL Publications	42
Join Our List	43

**WHO ARE
WE?**

New Jersey Department of Labor
Office of Research and Information



Division of Economic and Demographic
Research

SDC

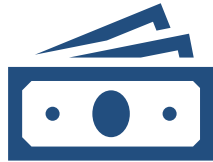
BLS

LMI

The purpose of this report is to highlight the key demographic and economic trends in the county



Somerset County has a **higher median age and a greater share of foreign-born residents** than New Jersey overall.



Somerset County's real GDP ranks 7th among all New Jersey counties.



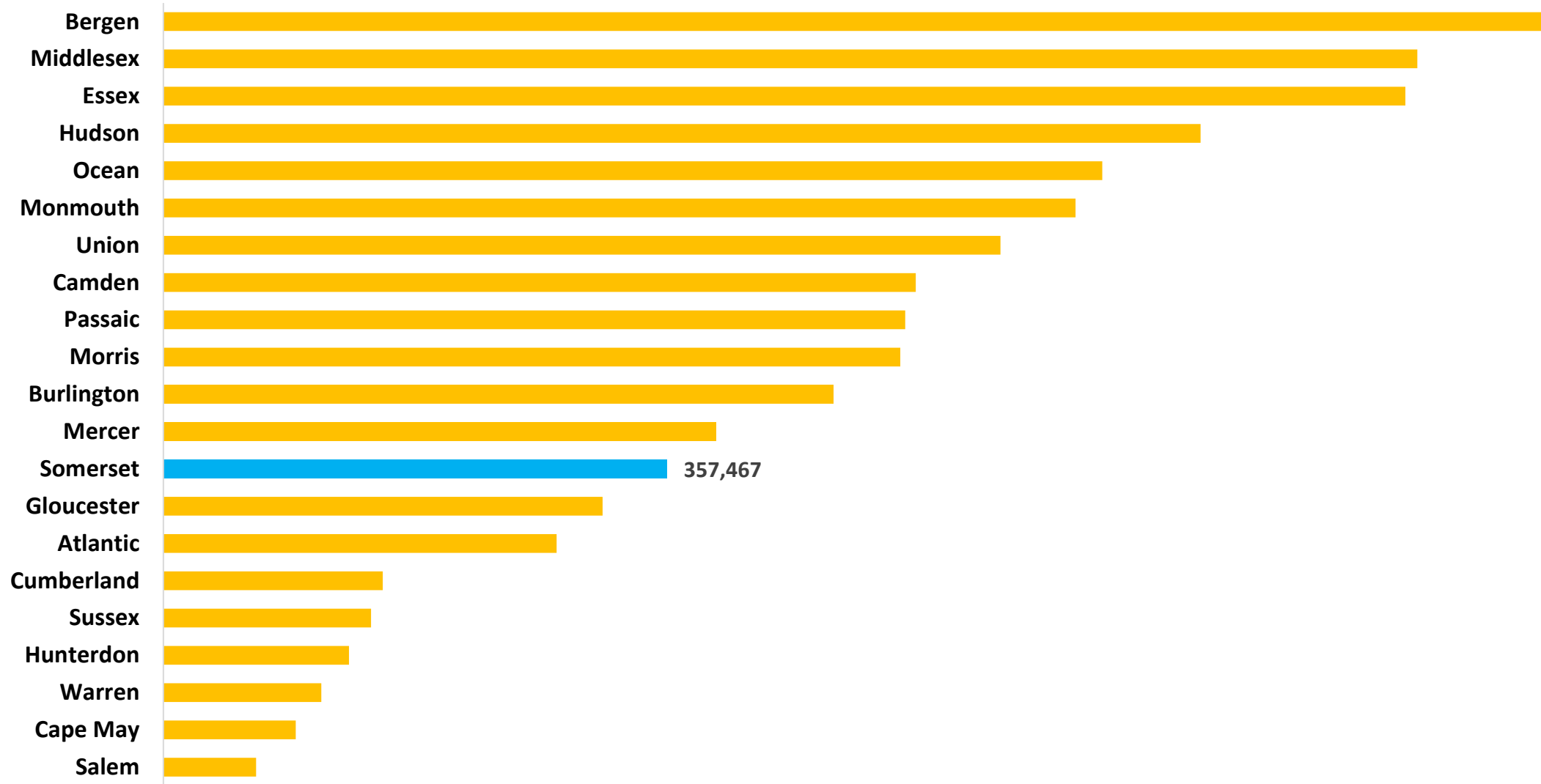
The **top** occupations in demand include Registered Nurses, Software Developers, and Medical and Health Services Managers



DEMOGRAPHIC AND HOUSING CHARACTERISTICS

Somerset County's population was 357,467 in 2024.

Population Estimates by County in New Jersey, 2024



Somerset County’s median age is higher with a larger foreign-born population than the state.

Demographic Characteristics

Indicator	Somerset County	New Jersey
Median Age	41.7	40.1
% of Older Population (65+)	18.0%	18.0%
% of Language Other Than English Spoken at Home	36.9%	34.3%
% of Foreign-Born Population	29.3%	25.0%
% of Hispanic or Latino (of Any Race)	18.6%	23.5%

The share of Somerset County residents with a bachelor's degree or higher is 13.8 percentage points above the state.

Educational Attainment (Population 25 Years and Older)

Indicator	Somerset County	New Jersey
High School or Equivalent Degree	17.2%	24.7%
Some College, No Degree	13.3%	14.5%
Associate's Degree	5.4%	6.6%
Bachelor's Degree or Higher	58.3%	44.5%
High School Degree or Higher	94.2%	90.3%

Somerset County has a higher median household income and a lower poverty rate than the state overall.

Income & Poverty

Indicator	Somerset County	New Jersey
Median Household Income	\$134,524	\$104,294
% of Poverty	5.8%	9.2%

Note: Median Household Income in the Past 12 Months (in 2024 Inflation-Adjusted Dollars)

Somerset County residents pay higher rent and have a higher homeownership rate than the state.

Housing Characteristics

Indicator	Somerset County	New Jersey
Total Households	132,802	3,543,944
Median Gross Rent	\$2,187	\$1,800
Homeownership Rate	75.1%	63.9%
% of Housing Value of Owner Occupied (\geq\$300,000)	92.0%	80.7%

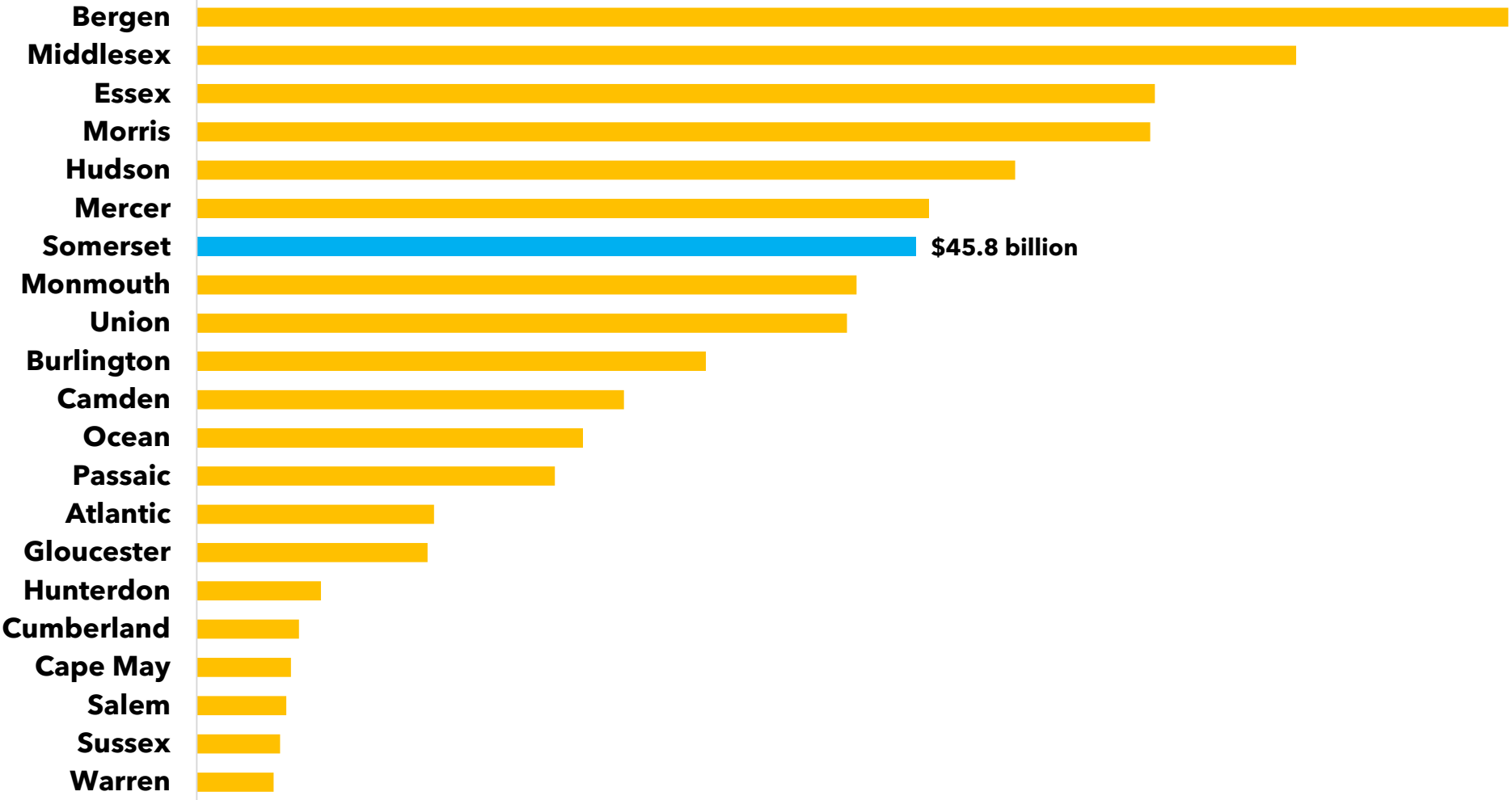
Somerset County residents have longer commute times, and a higher percentage of remote workers compared to the state.

Commuting Characteristics

Indicator	Somerset County	New Jersey
Average Travel Time to Work (in Minutes)	33.6	31.9
% of Public Transportation	4.5%	9.7%
% of Working From Home	16.6%	13.5%

In 2024, Somerset County's real GDP was \$45.8 billion, ranking 7th among all New Jersey counties.

Real Gross Domestic Product (GDP) by County in New Jersey, 2024



Source: U.S. Bureau of Economic Analysis, "[CAGDP1 County and MSA gross domestic product \(GDP\) summary](#)" (accessed Wednesday, April 2, 2025).



Establishments and Employment

Somerset County

Source: Quarterly Census of Employment and Wages (QCEW) program, 2024 Annual Averages

The QCEW program produces quarterly and annual data on the number of establishments, total employment, and wages for workers covered by New Jersey unemployment insurance (UI) laws, as well as federal employees under the Unemployment Compensation for Federal Employees (UCFE) program. This data is published at various geographical and industry levels.

17.1% of Somerset County establishments are in health care and social assistance.

Somerset County Establishments, Ranked by Percent of the Total Establishments Private Ownerships

Industry	Total Number of Establishments	Total Number of Employees	% of Total Establishments
Health care and social assistance	1,839	24,126	17.1%
Professional and technical services	1,665	25,664	15.5%
Other services, except public administration	929	5,563	8.6%
Retail trade	921	17,019	8.6%
Construction	812	7,537	7.5%
Administrative and waste services	779	12,953	7.2%
Accommodation and food services	772	11,881	7.2%
Wholesale trade	571	11,352	5.3%
Finance and insurance	495	6,632	4.6%
Manufacturing	336	15,556	3.1%
Transportation and warehousing	211	6,522	2.0%
Educational services	190	3,313	1.8%
Arts, entertainment, and recreation	156	3,143	1.4%
Management of companies and enterprises	96	11,261	0.9%
Utilities	12	328	0.1%

Note: Full list of establishments in Somerset County is available in [Appendix](#).

In Somerset County, private professional and technical services have higher employment shares compared to the state.

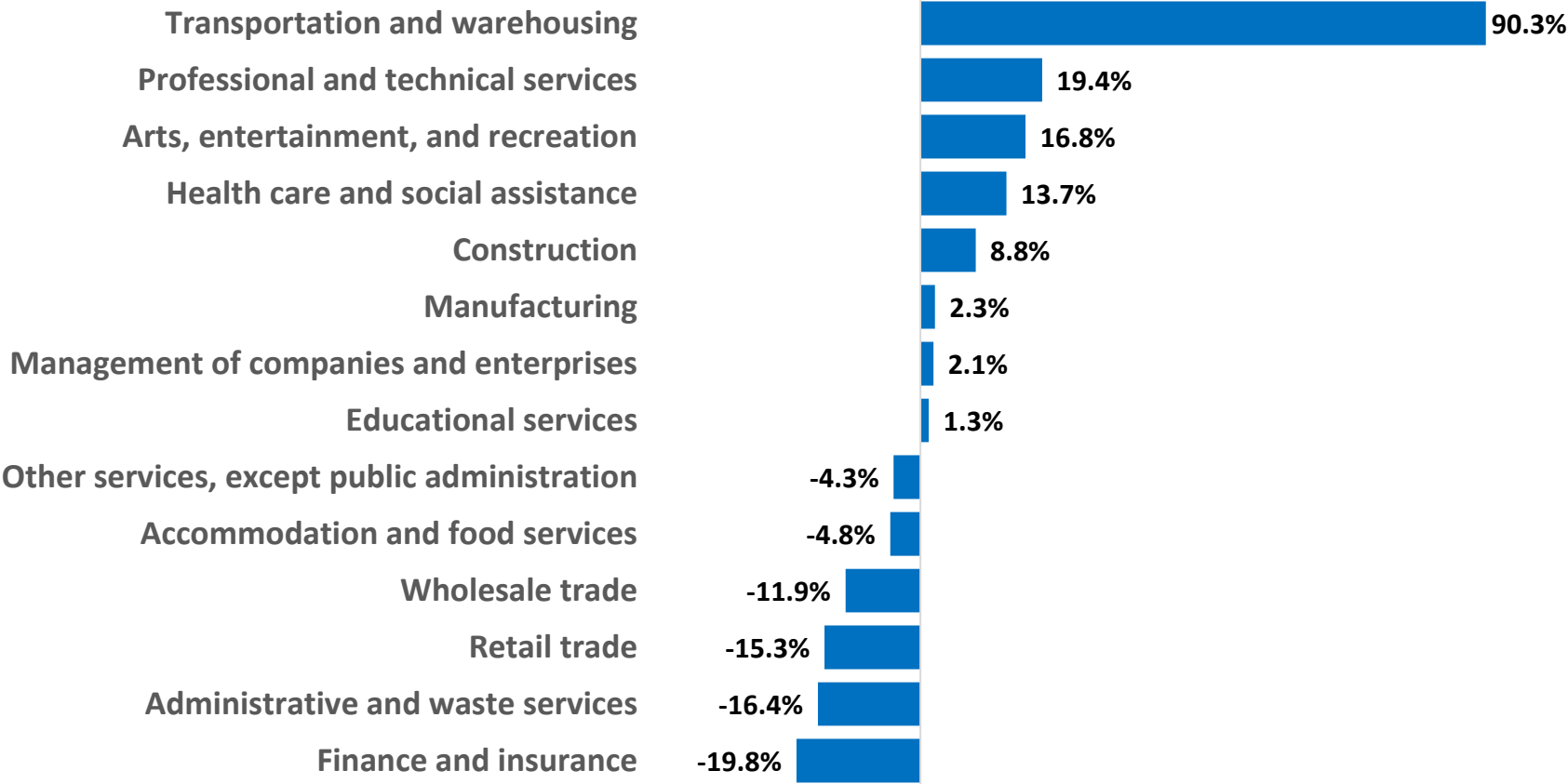
Employment by Private Industry Somerset County vs. New Jersey, 2024

Industry	Somerset County		New Jersey		Difference between
	Employment	% of Total	Employment	% of Total	
Utilities	328	0.2%	14,941	0.4%	-0.2%
Construction	7,537	4.3%	164,014	4.5%	-0.1%
Manufacturing	15,556	8.9%	253,054	6.9%	2.0%
Wholesale trade	11,352	6.5%	213,549	5.8%	0.7%
Retail trade	17,019	9.7%	427,521	11.6%	-1.9%
Transportation and warehousing	6,522	3.7%	233,943	6.4%	-2.6%
Finance and insurance	6,632	3.8%	189,987	5.2%	-1.4%
Professional and technical services	25,664	14.7%	336,105	9.1%	5.6%
Management of companies and enterprises	11,261	6.4%	82,588	2.2%	4.2%
Administrative and waste services	12,953	7.4%	286,750	7.8%	-0.4%
Educational services	3,313	1.9%	90,018	2.4%	-0.6%
Health care and social assistance	24,126	13.8%	656,356	17.8%	-4.0%
Arts, entertainment, and recreation"	3,143	1.8%	73,699	2.0%	-0.2%
Accommodation and food services	11,881	6.8%	328,905	8.9%	-2.1%
Other services, except public administration	5,563	3.2%	144,086	3.9%	-0.7%

Full list of employment by industry is available in [Appendix](#).

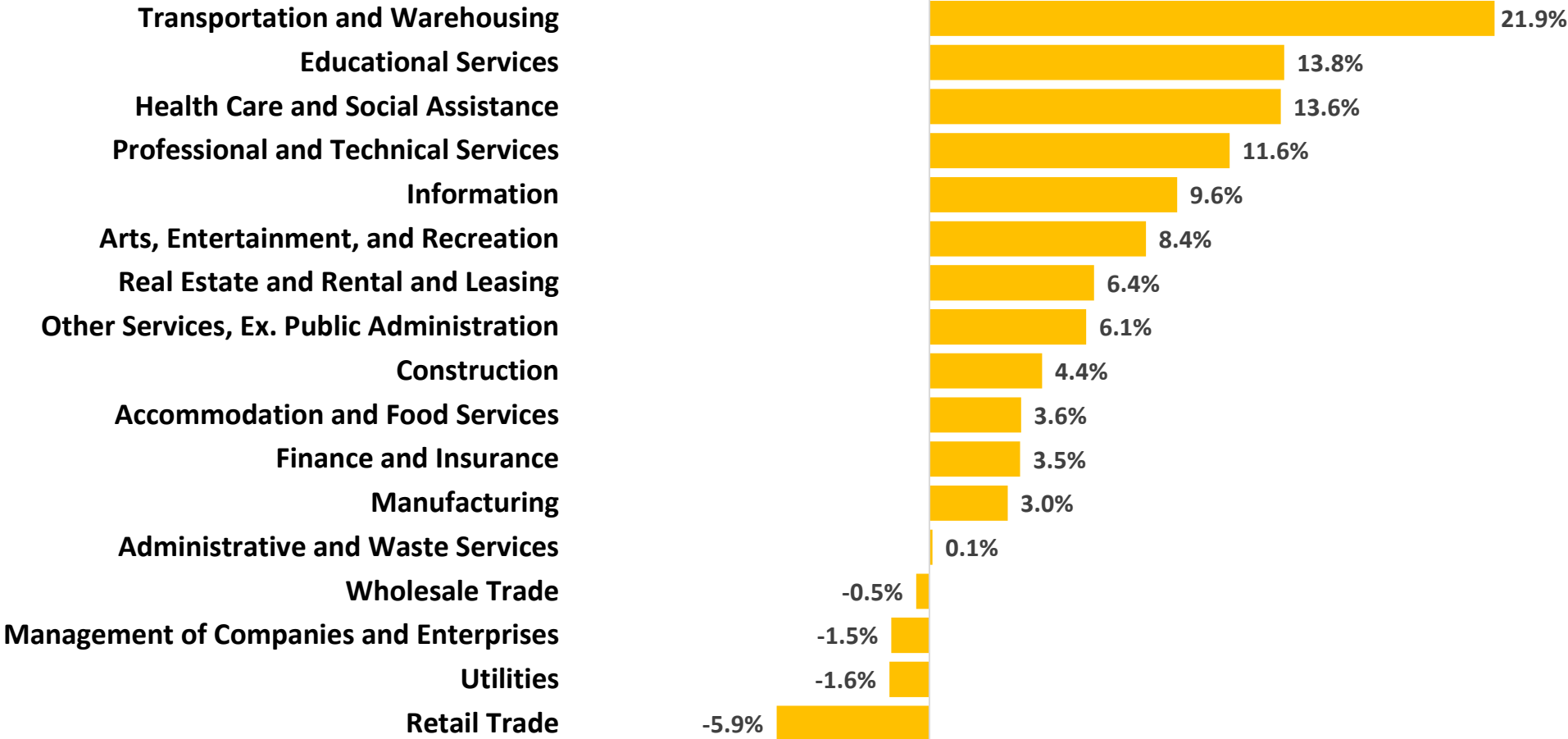
Between 2018 and 2024, transportation and warehousing saw the largest employment growth in Somerset County, increasing by 90.3%.

Percent Change in Employment by Industry
Somerset County, 2018-2024 (ranked by percentage change in employment)



Transportation and warehousing saw strong growth in New Jersey, expanding by 21.9% from 2018 to 2024.

Percent Change in Employment by Industry
New Jersey, 2018-2024 (ranked by percentage change in employment)





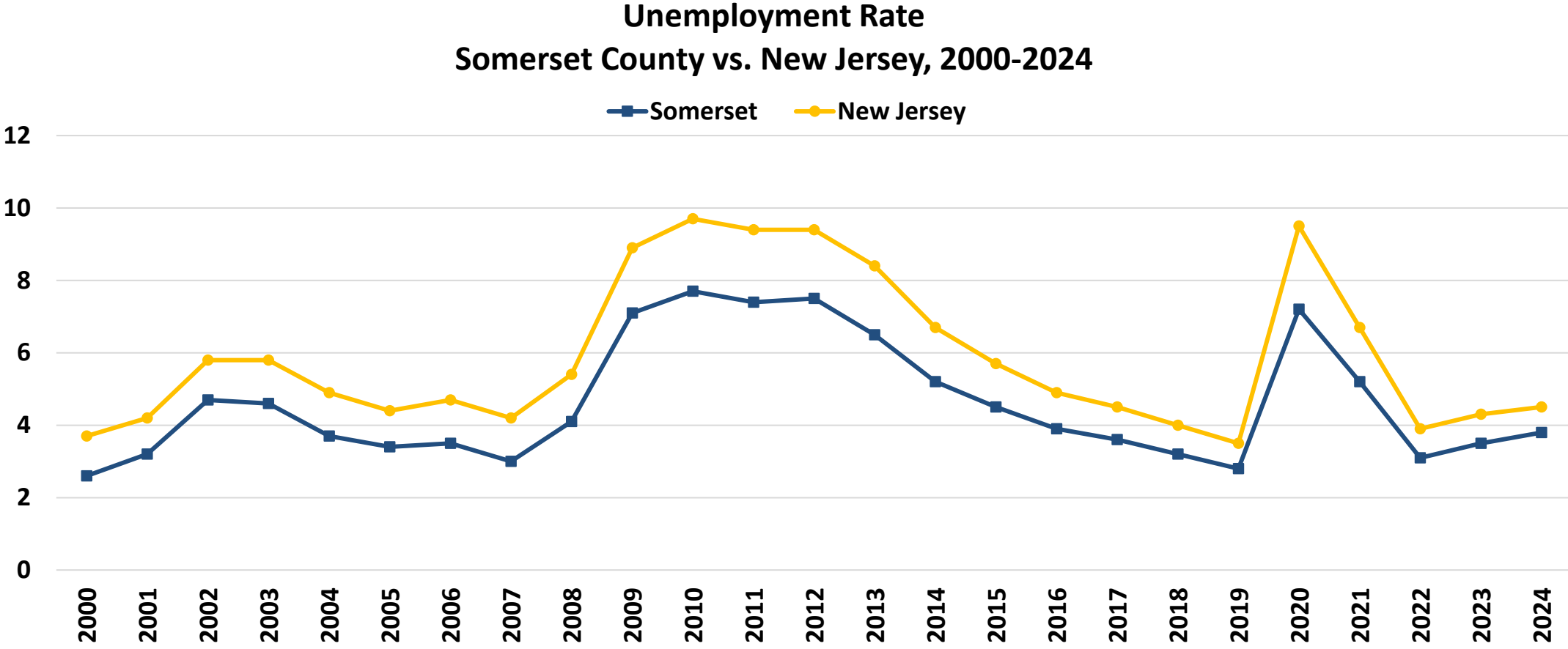
Unemployment Trend

Somerset County vs. New Jersey

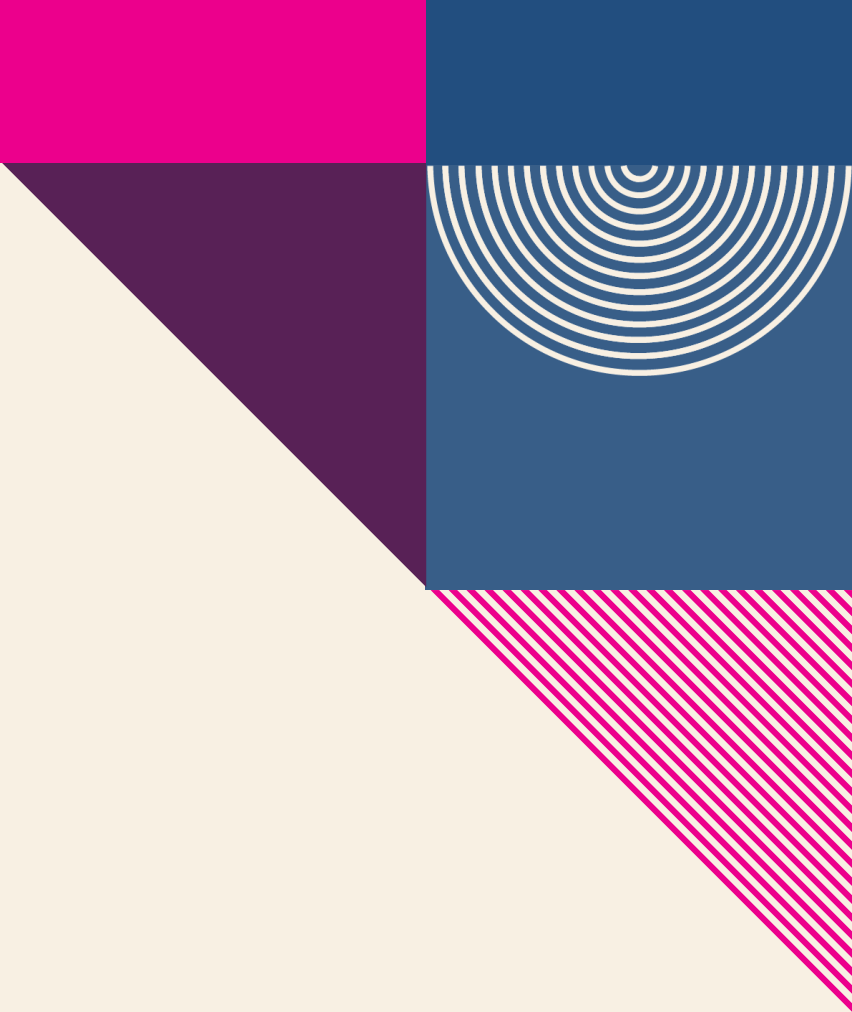
Source: Local Area Unemployment Statistics (LAUS), 2024

The Local Area Unemployment Statistics (LAUS) program produces monthly and annual employment, unemployment, and labor force data for Census regions and divisions, States, counties, metropolitan areas, and many cities, by place of residence.

The unemployment rate in Somerset County follows state trends but was lower than New Jersey.



Source: ORI-EDR, Local Area Unemployment Statistics (LAUS) program, 2024



Occupational Employment and Wages

Somerset County vs. New Jersey

Source: 2024 National Occupational Employment and Wage Estimates (OEWS)

The Occupational Employment and Wage Statistics (OEWS) program produces employment, and wage estimates annually for approximately 830 occupations. These estimates are available for the nation, for individual states, and for metropolitan and nonmetropolitan areas; national occupational estimates for specific industries are also available.

19.2% of Somerset County's total employment is concentrated in the top 10 occupations.

Top 10 Occupations, Ranked by Employment Somerset County, 2024

Occupation	Employment	% of Total Employment	Median Hourly Wage
Software Developers	5,010	2.6%	\$64.57
Packers and Packagers, Hand	4,150	2.2%	\$20.70
Home Health and Personal Care Aides	3,960	2.1%	\$18.81
Laborers and Freight, Stock, and Material Movers, Hand	3,650	1.9%	\$19.15
Cashiers	3,480	1.8%	\$16.31
Computer and Information Systems Managers	3,410	1.8%	\$92.27
Retail Salespersons	3,410	1.8%	\$17.39
Fast Food and Counter Workers	3,210	1.7%	\$16.22
Customer Service Representatives	3,150	1.7%	\$22.70
Office Clerks, General	3,130	1.6%	\$24.02
Top 10 Occupations, Total	36,560	19.2%	
All Occupations, Total	190,680	100.0%	\$29.97

Note: OEWS collects the data for 2024.

In New Jersey, the top 10 occupations account for 20.1% of total employment.

Top 10 Occupations, Ranked by Employment New Jersey, 2024

Occupation	Employment	% of Total Employment	Median Hourly Wage
Home Health and Personal Care Aides	105,460	2.5%	\$17.83
Laborers and Freight, Stock, and Material Movers	101,720	2.4%	\$18.78
Registered Nurses	95,150	2.2%	\$49.39
Cashiers	93,270	2.2%	\$15.96
Retail Salespersons	87,760	2.1%	\$17.13
Fast Food and Counter Workers	86,980	2.0%	\$16.01
Packers and Packagers, Hand	76,060	1.8%	\$20.56
Office Clerks, General	71,140	1.7%	\$23.07
Stockers and Order Fillers	70,780	1.7%	\$17.69
Janitors and Cleaners	67,590	1.6%	\$17.94
Top 10 Occupations, Total	855,910	20.1%	
All Occupations, Total	4,250,430	100.0%	\$27.51

Note: OEWS collects the data for 2024.

Between 2022 and 2032 in Somerset County, the computer and mathematical occupational group is projected to see the largest net growth (+1,350).

**Actual and Projected Employment by Occupation Group, Somerset County
Top 10 Occupation Groups Ranked by 2032 Employment Projections**

Occupational Group	2022 Actual	2032 Projected	Net Change	Percent Change
Office and Administrative Support	29,100	26,850	-2,250	-7.7%
Transportation and Material Moving	21,650	22,950	1,300	6.0%
Management	19,750	20,750	1,000	5.1%
Sales and Related	19,550	19,300	-250	-1.3%
Business and Financial Operations	17,850	18,250	400	2.2%
Computer and Mathematical	12,850	14,200	1,350	10.5%
Food Preparation and Serving Related	10,650	11,550	900	8.5%
Production	10,800	10,700	-100	-0.9%
Educational Instruction and Library	10,250	10,700	450	4.4%
Healthcare Practitioners & Technical	9,450	10,300	850	9.0%

Note: Employment data for Top 15 occupational groups is available in the [Appendix](#).



JOB POSTINGS



Job Postings

Somerset County vs. New Jersey

Source: Lightcast

Lightcast collect raw data on postings from more than 160,000 online sources, then synthesize and interpret those findings to provide meaningful insight in near real time. Job posting analytics can identify supply and demand for workers, skills, and jobs all over the world, as well as important contextual details like compensation trends.

Limitations: One job posting does not necessarily equal one actual job opening. Some companies may post jobs to signal growth to investors or advertise positions in multiple states. Additionally, a decline in job postings doesn't always indicate reduced demand; it could simply mean that companies have already filled their positions and are no longer actively recruiting. We treat this data as directional, offering insights into employer demand rather than exact measurements.



Top 5 Hiring Companies Somerset County, 2024

- **Johnson & Johnson**
- **Verizon Communications**
- **RWJBarnabas Health**
- **Daiichi Sankyo**
- **Hackensack Meridian Health**

Top 5 Occupations Somerset County, 2024

- Registered Nurses
- Retail Salespersons
- Home Health and Personal Care Aides
- Medical and Health Services Managers
- Software Developers



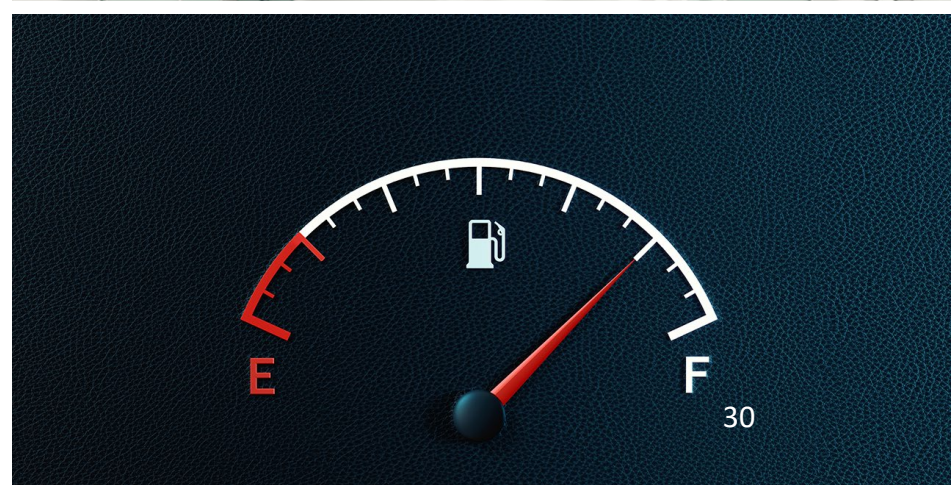
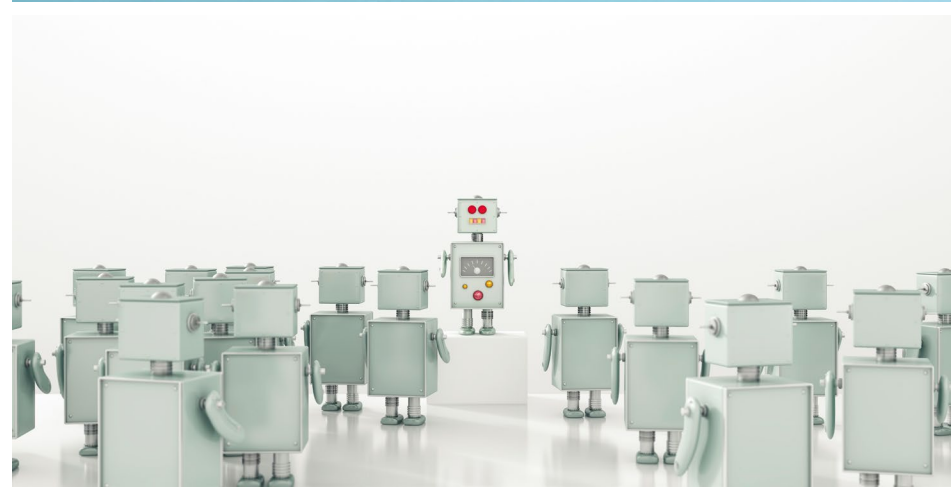


Top 5 Specialized Skills Somerset County, 2024

- **Project Management**
- **Marketing**
- **Pharmaceuticals**
- **Finance**
- **Auditing**

Top 5 Software Skills

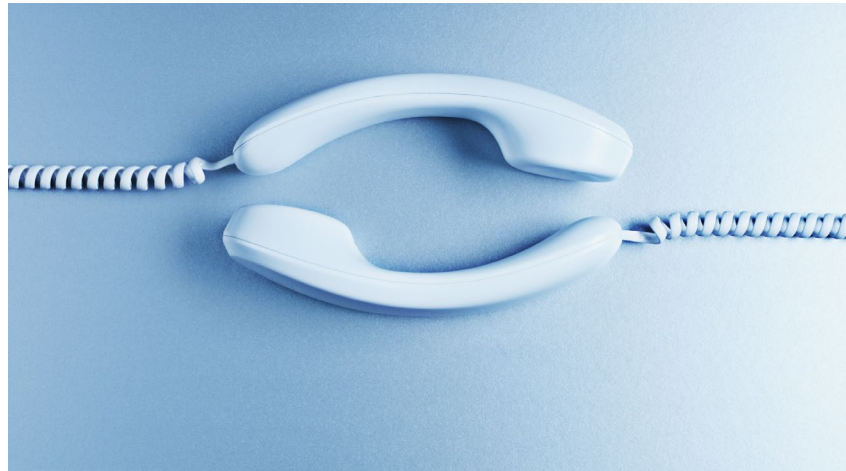
- Microsoft Office (e.g., Excel, and PowerPoint)
- Programming Language (e.g., SQL, Python, and R)
- Salesforce
- Dashboard
- Amazon Web Services

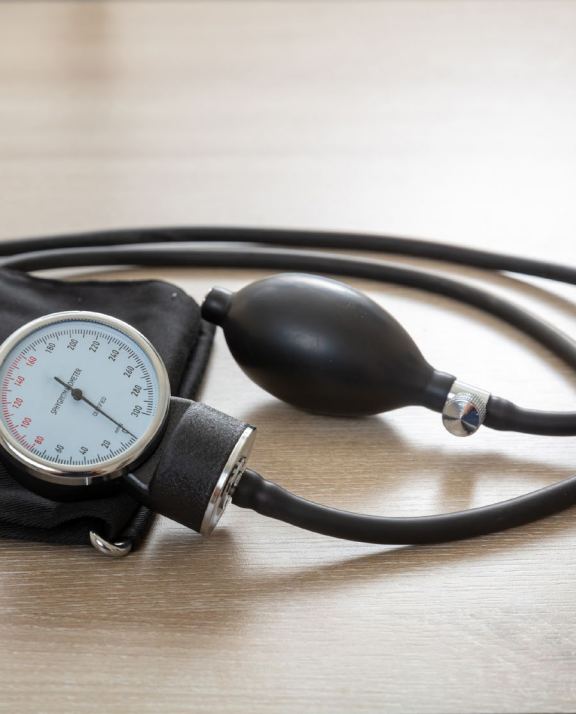




Top 5 Soft Skills Somerset County, 2024

- **Communication**
- **Management**
- **Customer Service**
- **Leadership**
- **Operations**





Top 5 Certificates

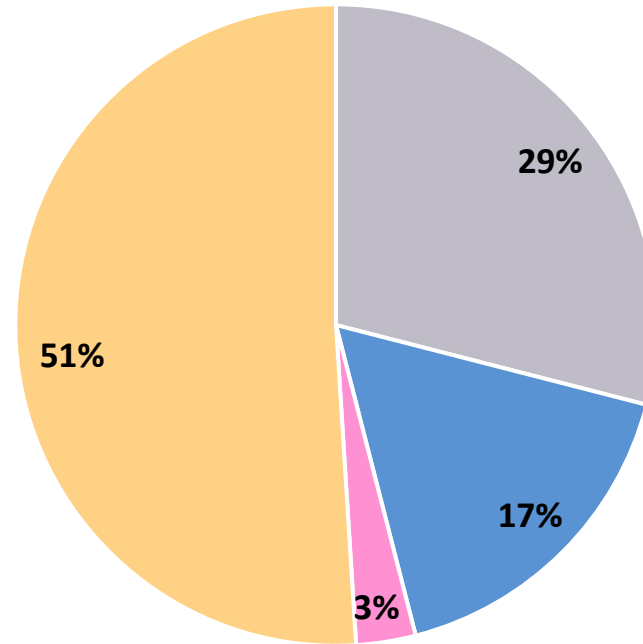
- **Valid Driver's License**
- **Master Of Business Administration (MBA)**
- **Registered Nurse (RN)**
- **Basic Life Support (BLS) Certification**
- **Cardiopulmonary Resuscitation (CPR) Certification**



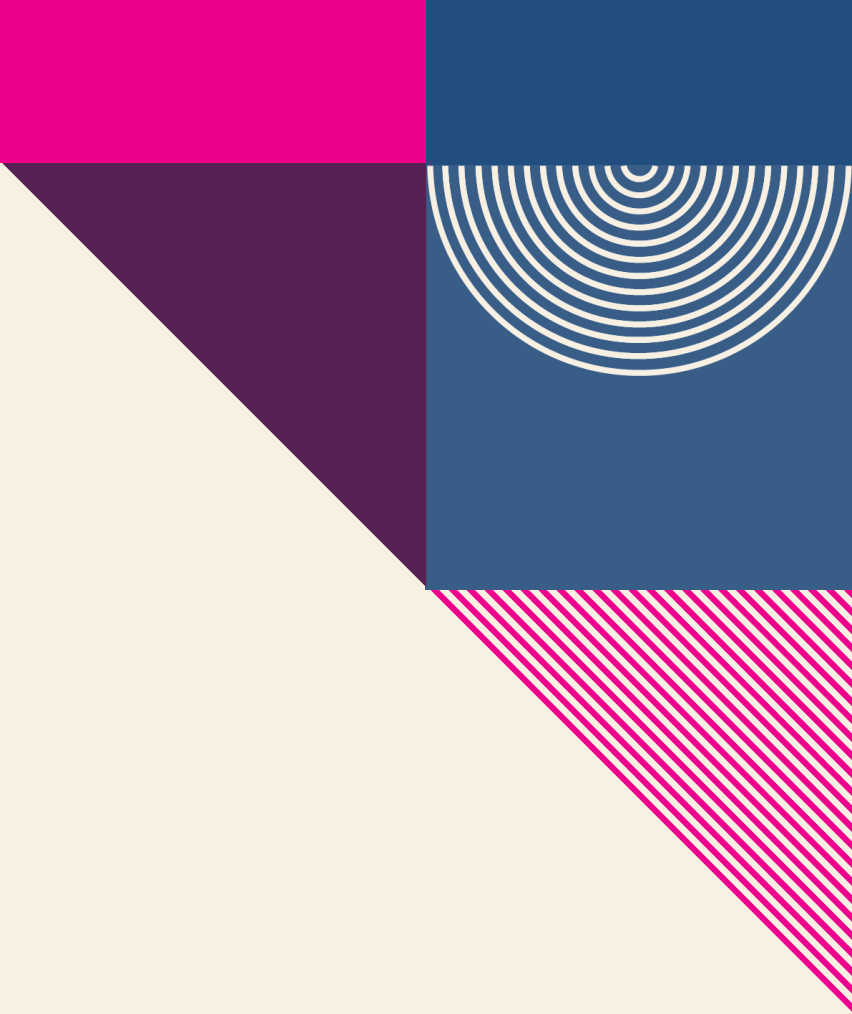
Half of all job postings in Somerset County require a bachelor's degree or higher.

Job Postings by Educational Attainment
Somerset County, 2024

■ No education listed ■ High school or GED ■ Associate's degree ■ Bachelor's degree or higher



Note: Bachelor's degree or higher includes Bachelor's Degree, Master, Ph.D. or Professional Degree. While 29% of job postings did not specify educational attainment, this does not necessarily mean there are no requirements for it.



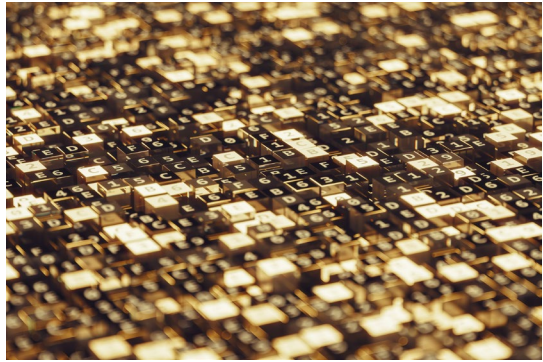
AI-related Job Postings

Somerset County vs. New Jersey

Source: Lightcast

To identify AI-related job postings, ORI-EDR compiled a curated list of 130 specific terms. A job listing is deemed AI-related if any of these terms appear in the skills section. A job listing is classified as AI-related if any of these terms are present in the skills section. This includes, but is not limited to, terms such as "AI/ML Inference," "Conversational AI," "Machine Learning Algorithms," "Supervised Learning," and "Deep Learning."

Limitations: One job posting does not necessarily equal one actual job opening. Some companies may post jobs to signal growth to investors or advertise positions in multiple states. Additionally, a decline in job postings doesn't always indicate reduced demand; it could simply mean that companies have already filled their positions and are no longer actively recruiting. We treat this data as directional, offering insights into employer demand rather than exact measurements.



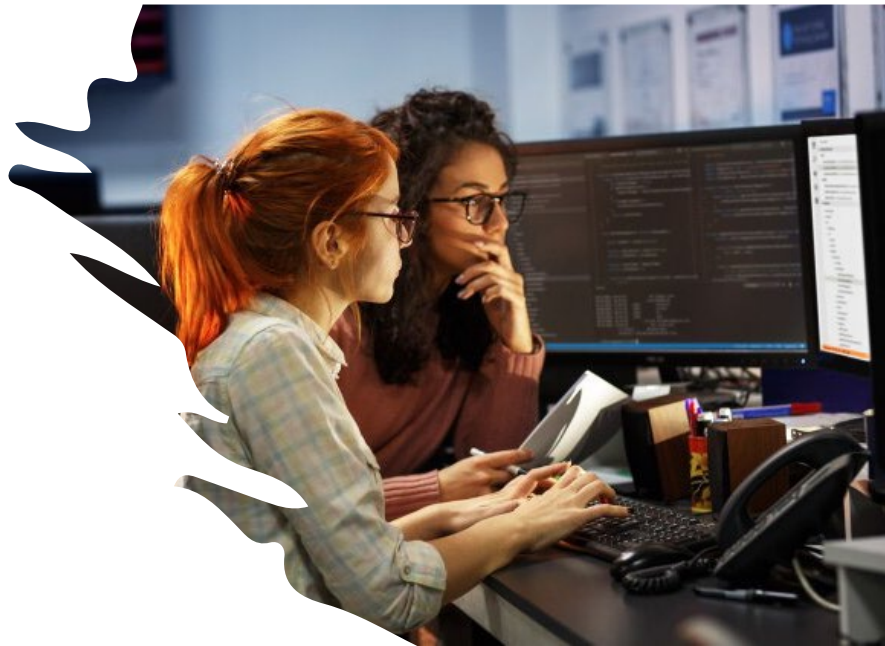
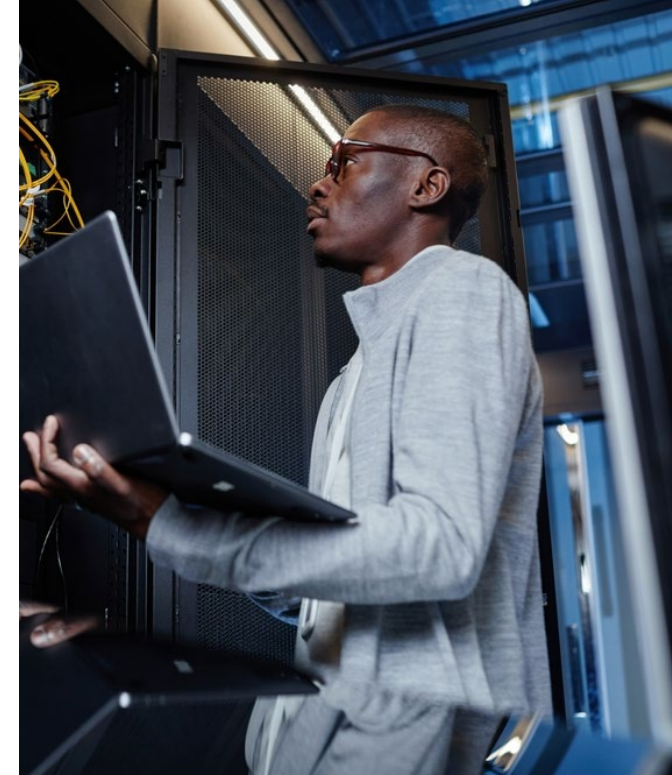
Top 5 AI-related Hiring Companies Somerset County, 2024

- Johnson & Johnson
- Verizon Communications
- Daiichi Sankyo
- Sanofi
- Kenvue Brands LLC



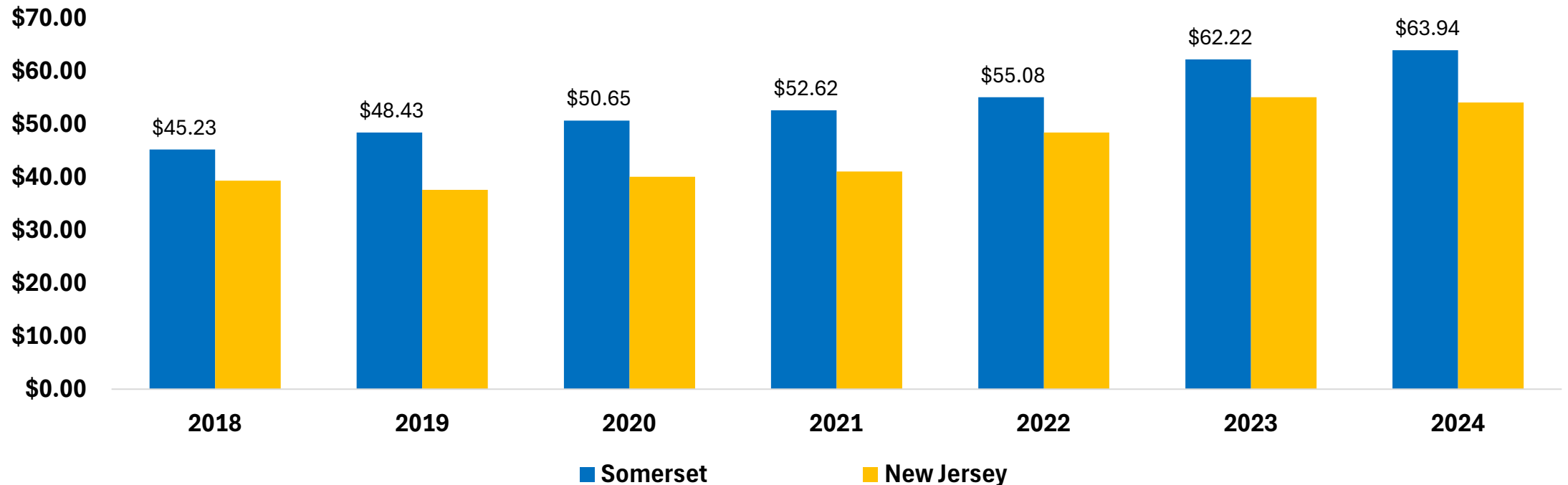
Top 5 AI-related Occupations Somerset County, 2024

- Software Developers
- Computer Occupations
- Data Scientists
- Project Management Specialists
- Marketing Managers



In Somerset County, the median hourly wage for AI-related job postings is consistently higher than the state.

**Median Hourly Wage in AI-related Job Postings,
Somerset County vs. New Jersey, 2018-2024**





TAKEAWAYS

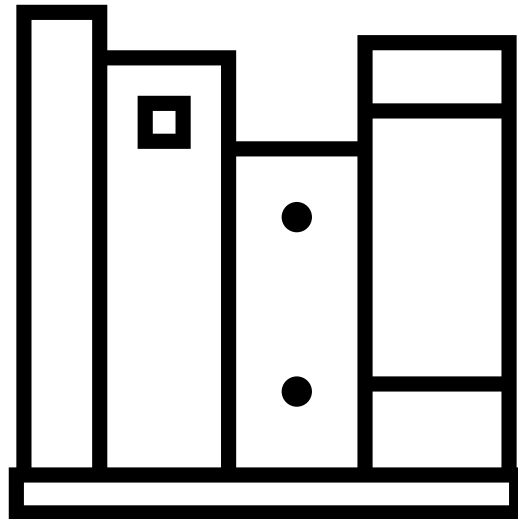


- **Key Economic and Workforce Insights: Somerset County**
 - **Demographics**
 - Somerset County has a higher median age and a greater share of foreign-born residents than New Jersey overall.
 - The share of residents with a bachelor's degree or higher is 13.8 percentage points greater in Somerset County than the state.



- **Key Economic and Workforce Insights: Somerset County (Continued)**
 - **Industry Composition**
 - 17.1% of business establishments are in health care and social assistance.
 - Private professional and technical services and manufacturing sectors have higher employment shares in Somerset County compared to the state.

2025 Report Overview and Subscription Information



This report was prepared by the Office of Research and Information, Division of Economic & Demographic Research. This division collects and disseminates vital data on employers, employees, and population demographics.

2025-2026 NJDOL PUBLICATIONS

- [Real-Time Insights: Analysis of Job Posting Data in New Jersey for 2025](#) (January 2026)
- [Identifying and Tracking Emerging Occupations in New Jersey's Key Sectors](#) (January 2026)
- [New Jersey's Manufacturing Sector](#) (Winter 2025)
- [County Brief: Labor Market Facts](#) (December 2025)
- [Labor Market Spotlight - Celebrating New Jersey's Veterans](#) (Issue No. 28, Volume 3: November 2025)
- [Labor Market Spotlight - New Jersey's Waterways Help Keep the Economy Flowing](#) (Issue No. 27, Volume 3: October 2025)
- [New Jersey Employment Situation](#) (September 2025)
- [Job Openings and Labor Turnover Survey \(JOLTS\)](#) (August 2025)
- [New Jersey Building Permits](#) (August 2025)
- [New Jersey's Life Sciences Sector](#) (Fall 2025)
- [Labor Market Spotlight - The Industries Powering New Jersey's Special Moments](#) (Issue No. 26, Volume 3: August 2025)
- [New Jersey's Health Care Sector](#) (June 2025)
- [New Jersey Business Employment Dynamics](#) (May 2025)
- [Survey of Occupational Injuries and Illnesses \(SOII\)](#) (April 2025)
- [Labor Market Spotlight - Fortune 500 Companies](#) (Issue No. 25, Volume 3: March 2025)
- [Labor Market Spotlight - Young Adult Workforce](#) (Issue No. 24, Volume 3: January 2025)

JOIN OUR LIST

Link: nj.gov/labor/subscribetoori





THANK YOU!



APPENDIX

Somerset County Establishments, Ranked by Percent of the Total Establishments All Ownerships

Industry	Total Number of Establishments	Total Number of Employees	% of Total Establishments
Health care and social assistance	1,839	24,126	17.1%
Professional and technical services	1,665	25,664	15.5%
Other services, except public admin.	929	5,563	8.6%
Retail trade	921	17,019	8.6%
Construction	812	7,537	7.5%
Administrative and waste services	779	12,953	7.2%
Accommodation and food services	772	11,881	7.2%
Wholesale trade	571	11,352	5.3%
Finance and insurance	495	6,632	4.6%
Manufacturing	336	15,556	3.1%
Transportation and warehousing	211	6,522	2.0%
Educational services	190	3,313	1.8%
Arts, entertainment, and recreation"	156	3,143	1.4%
Mgt. of companies and enterprises	96	11,261	0.9%
Utilities	12	328	0.1%
Total	10,764	174,727	100.0%

Note: An establishment is considered unknown when there is insufficient detail to accurately determine its primary industry at that location. It will be assigned an industry code once the program can verify its main business activity.

Actual and Projected Employment by Occupation Group, Somerset County
Top 15 Occupations ranked by 2032 Employment Projections

Occupational Group	2022 Actual	2032 Projected	Net Change	Percent Change
Office and Administrative Support	29,100	26,850	-2,250	-7.7%
Transportation and Material Moving	21,650	22,950	1,300	6.0%
Management	19,750	20,750	1,000	5.1%
Sales and Related	19,550	19,300	-250	-1.3%
Business and Financial Operations	17,850	18,250	400	2.2%
Computer and Mathematical	12,850	14,200	1,350	10.5%
Food Preparation and Serving Related	10,650	11,550	900	8.5%
Production	10,800	10,700	-100	-0.9%
Educational Instruction and Library	10,250	10,700	450	4.4%
Healthcare Practitioners & Technical	9,450	10,300	850	9.0%
Healthcare Support	8,050	9,200	1,150	14.3%
Installation, Maintenance, and Repair	7,350	7,700	350	4.8%
Building and Grounds Cleaning & Maintenance	7,200	7,300	100	1.4%
Personal Care and Service	6,250	7,000	750	12.0%
Construction and Extraction	6,650	6,850	200	3.0%