

LMI Data Overview

New Jersey Department of Labor & Workforce Development

Office of Research and Information

What Is LMI?

Labor Market Information includes all quantitative or qualitative data and analysis related to employment and the workforce.

The goal of LMI is to help customers make informed plans, choices, and decisions for several purposes, including:

- Business investment decision making
- Career planning and preparation
- Education and training offerings
- Job search opportunities
- Hiring
- Public or private workforce investments

James F. Woods and Christopher J. O'Leary, "Conceptual Framework for an Optimal Labour Market Information System," W.E. Upjohn Institute for Employment Research, Technical Report No. 07-022, December 2006.

NJ Department of Labor & Workforce Development Offers a Variety of Information for Your Use

Population and Demographic Trends

- ▶ Census Data

Economic Data

- ▶ Labor Force Estimates
- ▶ Unemployment Rates
- ▶ Employment Data
- ▶ Industry and Occupational Employment Projections
- ▶ Population and Labor Force Projections
- ▶ Occupational Wage Rates

Key Industry Sectors

Life Sciences

Transportation, Distribution & Logistics

Finance

Manufacturing

Health Care

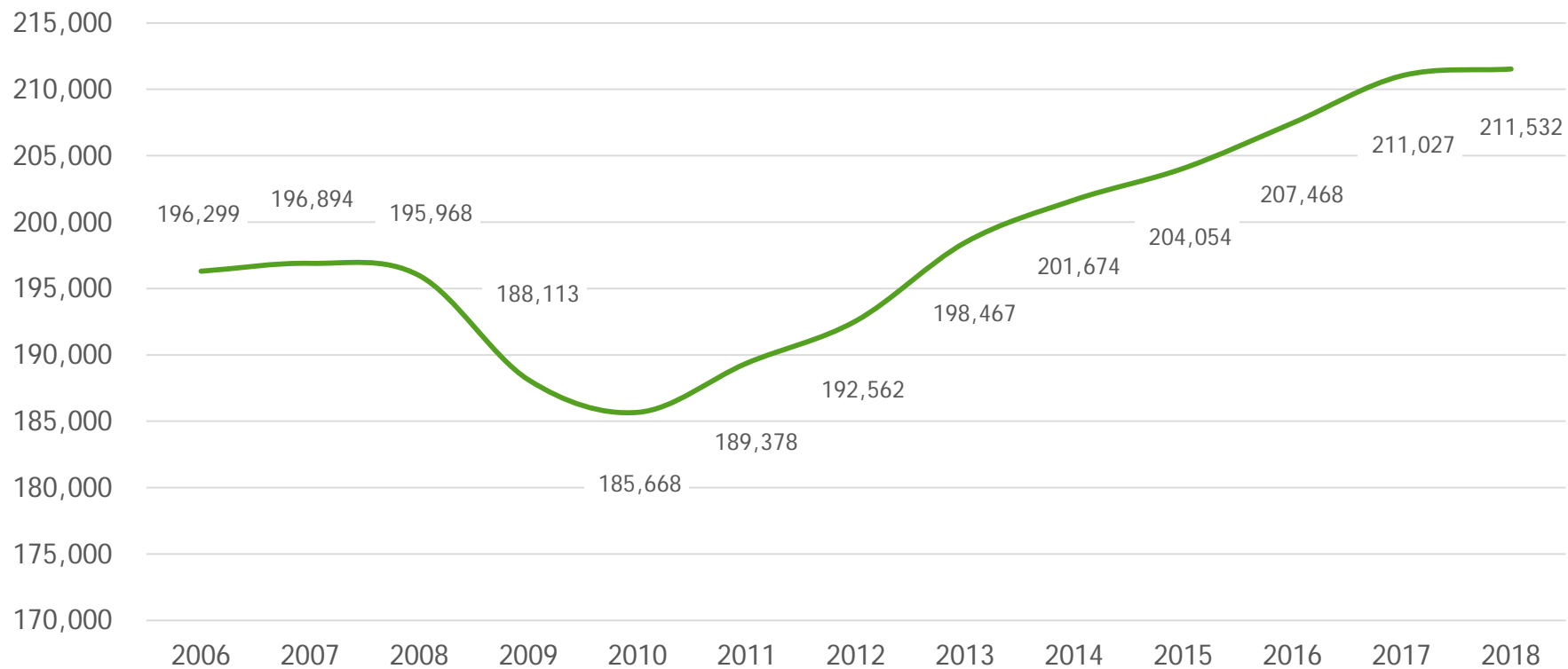
Technology

Leisure & Hospitality

Retail Trade

Construction & Utilities

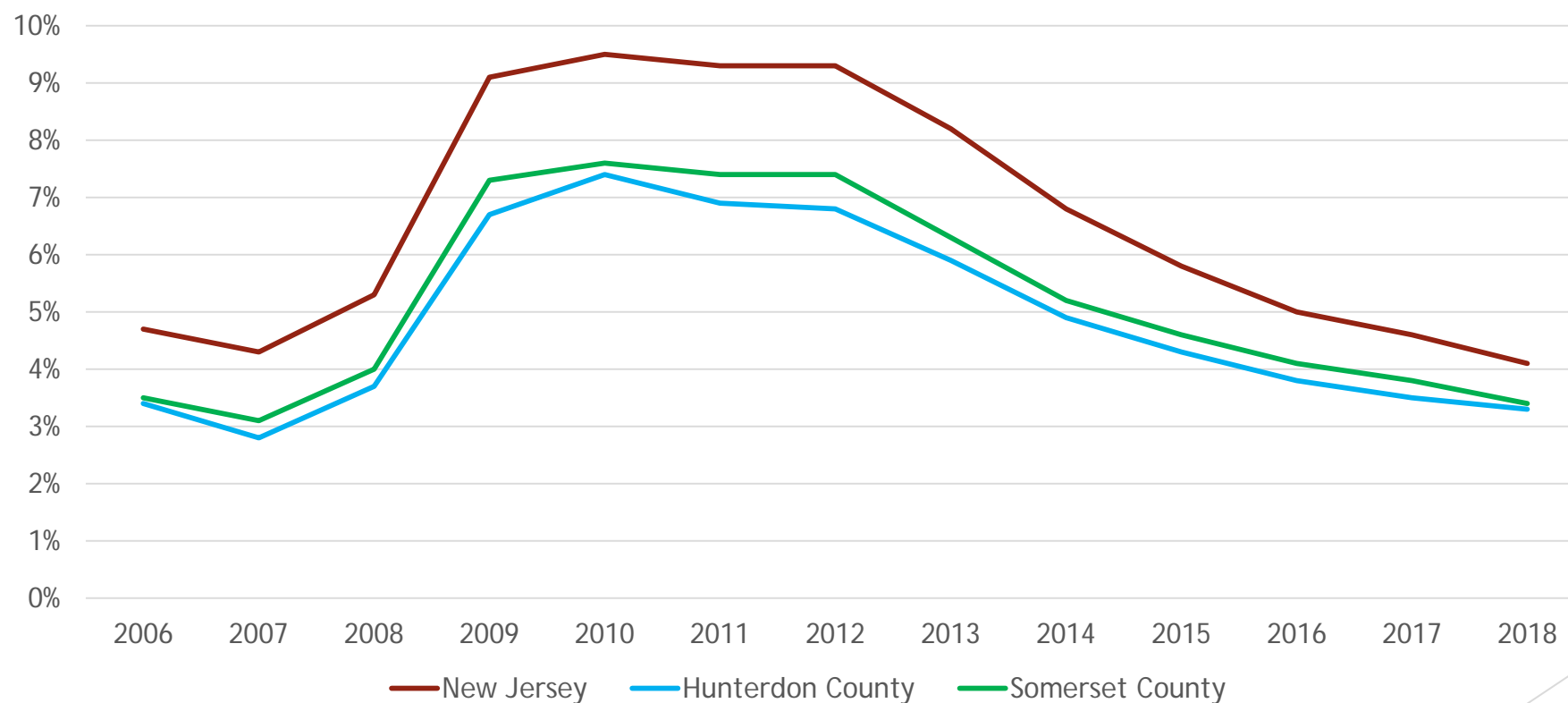
Hunterdon and Somerset County Combined Employment 2006-2018



Source: Quarterly Census of Employment & Wages (QCEW), Annual Averages
Prepared by: NJ Department of Labor and Workforce, Bureau of Labor Market Information, September 2019

Unemployment Rates 2006-2018

Hunterdon & Somerset vs. Statewide NJ



Source: NJLDOL, Labor Force Estimates
Prepared by: NJ Department of Labor and Workforce, Bureau of Labor Market
Information, September 2019

Census Reporter

Somerset County, NJ

County in: [New Jersey](#), [United States](#)

335,432

Population

301.9 square miles

1,111.2 people per square mile

Census data: ACS 2017 1-year unless noted



Income

\$52,785

Per capita income

about 1.3 times the amount in New Jersey: \$40,567

more than 1.5 times the amount in United States: \$32,397

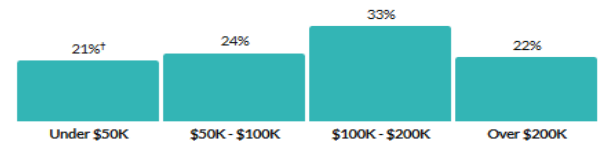
\$112,153

Median household income

about 1.4 times the amount in New Jersey: \$80,088

nearly double the amount in United States: \$60,336

Household income



[Show data](#) / [Embed](#)

Poverty

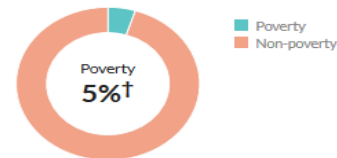
5.2%

Persons below poverty line

about half the rate in New Jersey: 10%

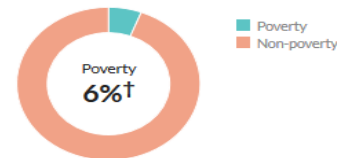
about two-fifths of the rate in United States: 13.4%

Children (Under 18)



[Show data](#) / [Embed](#)

Seniors (65 and over)



[Show data](#) / [Embed](#)

Transportation to work

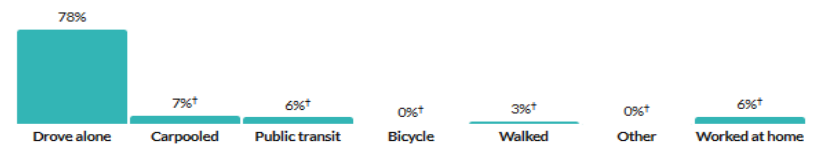
32 minutes

Mean travel time to work

about the same as the figure in New Jersey: 32.1

about 20 percent higher than the figure in United States: 26.9

Means of transportation to work



* Universe: Workers 16 years and over

[Show data](#) / [Embed](#)

Educational Attainment for the Population of Somerset & Hunterdon Counties (Age 25 and Over)

Educational attainment

95.2%

High school grad or higher

a little higher than the rate in New Jersey: 89.9%

about 10 percent higher than the rate in United States: 88%

52.5%

Bachelor's degree or higher

about 1.3 times the rate in New Jersey: 39.7%

more than 1.5 times the rate in United States: 32%

Educational attainment

95.2%

High school grad or higher

a little higher than the rate in New Jersey: 89.9%

about 10 percent higher than the rate in United States: 88%

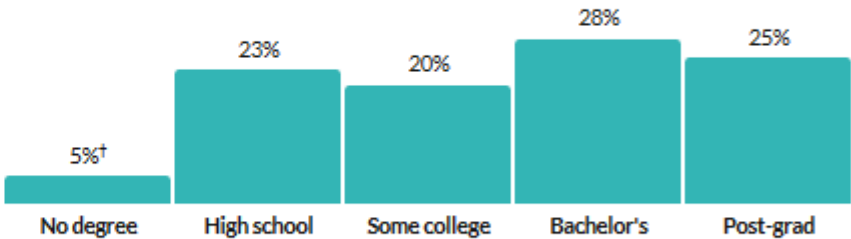
53%

Bachelor's degree or higher

about 1.3 times the rate in New Jersey: 39.7%

more than 1.5 times the rate in United States: 32%

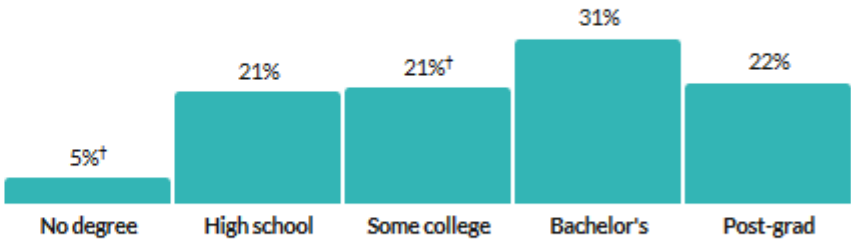
Population by minimum level of education



* Universe: Population 25 years and over

[Show data / Embed](#)

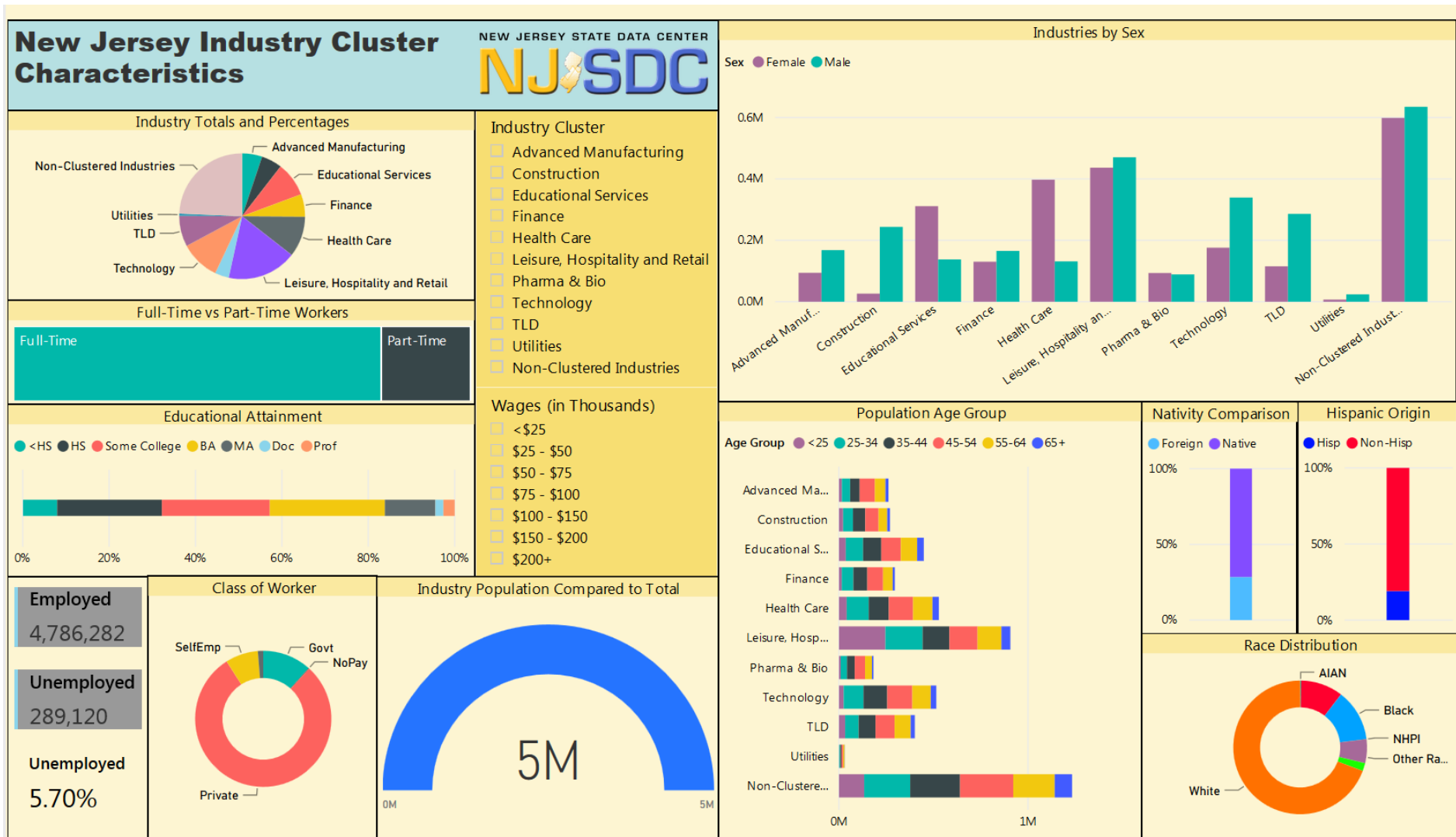
Population by minimum level of education



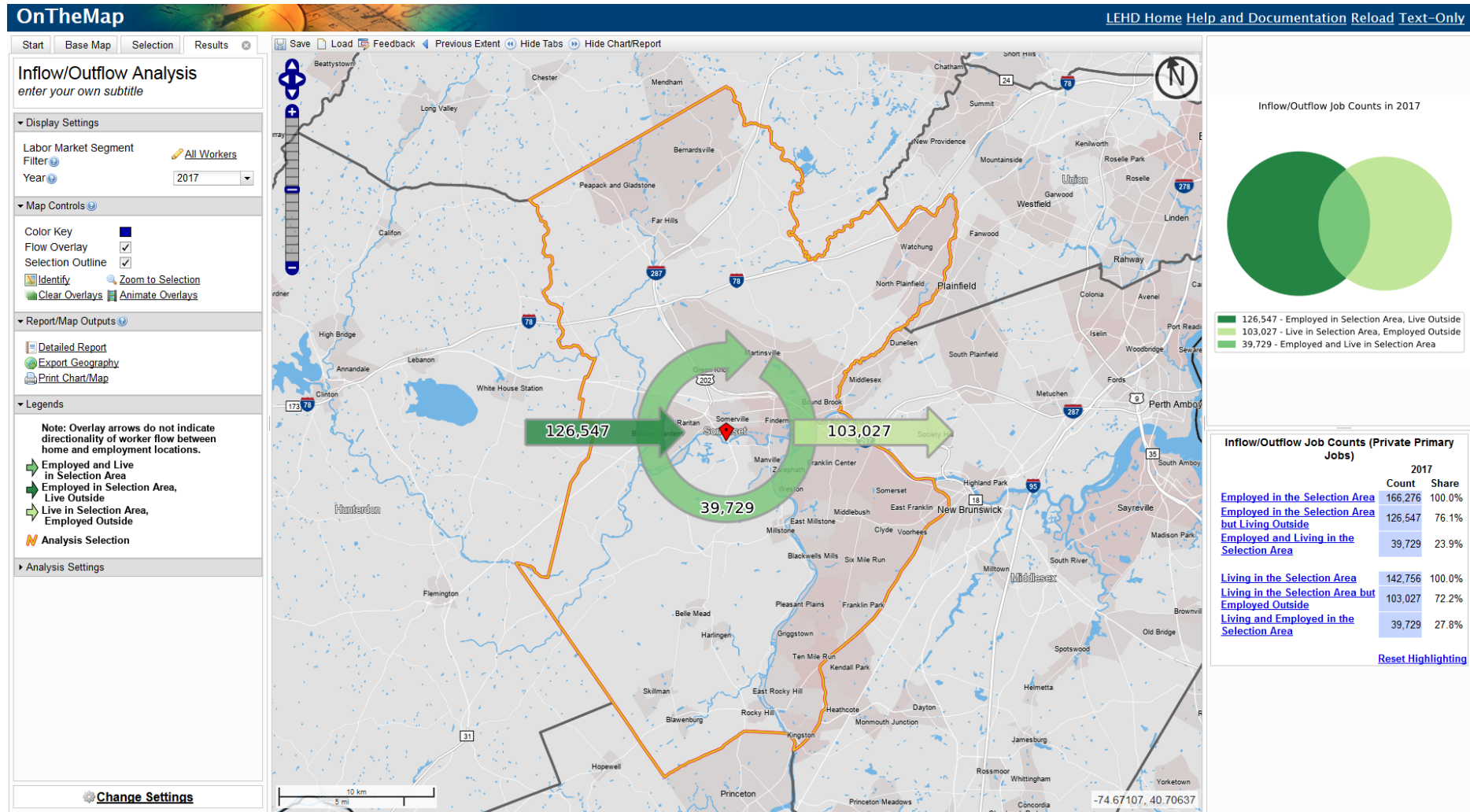
* Universe: Population 25 years and over

[Show data / Embed](#)

Industry Cluster Characteristics

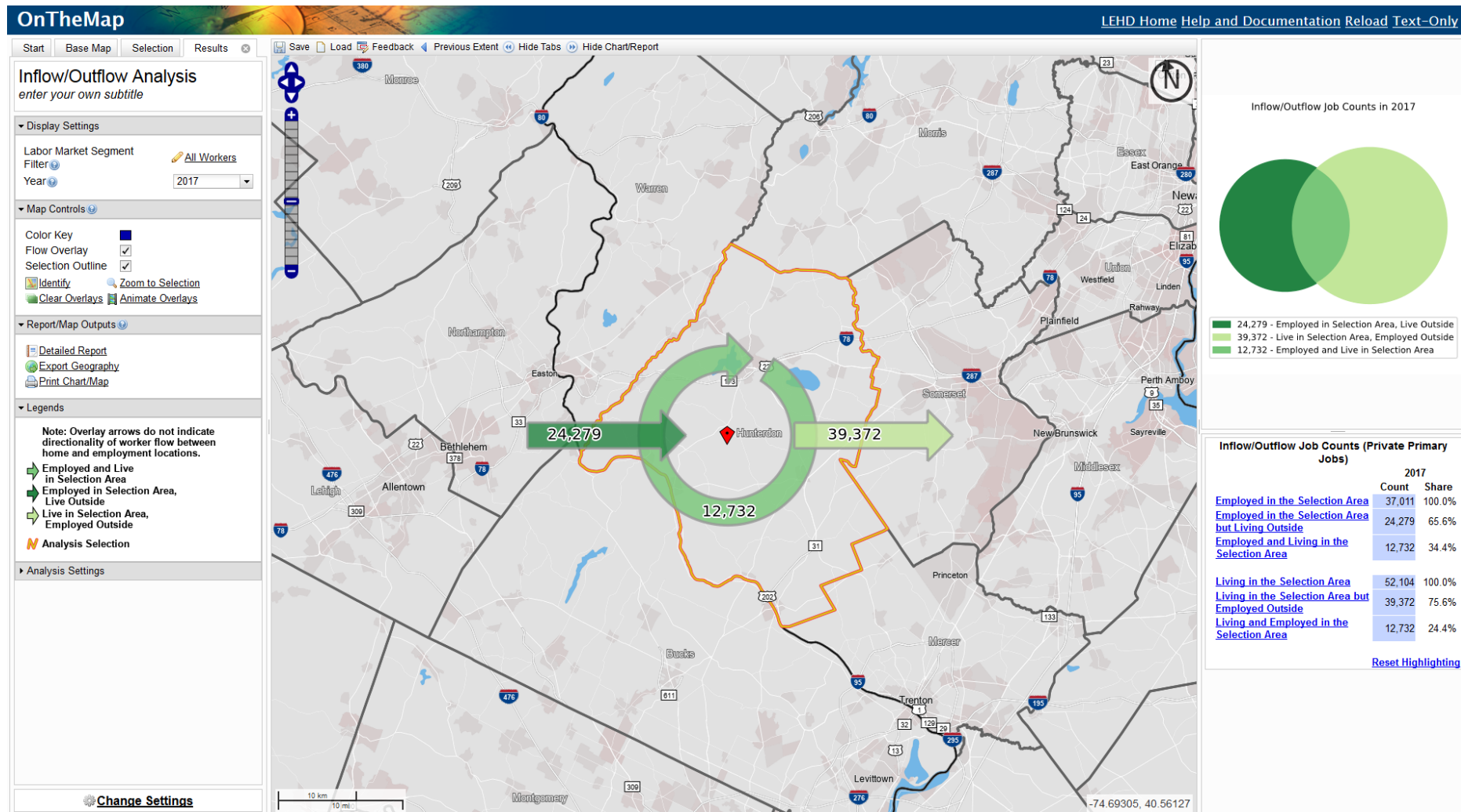


Somerset County Inflow/Outflow Analysis



Source: U.S. Census Bureau, Center for Economic Studies

Hunterdon County Inflow/Outflow Analysis



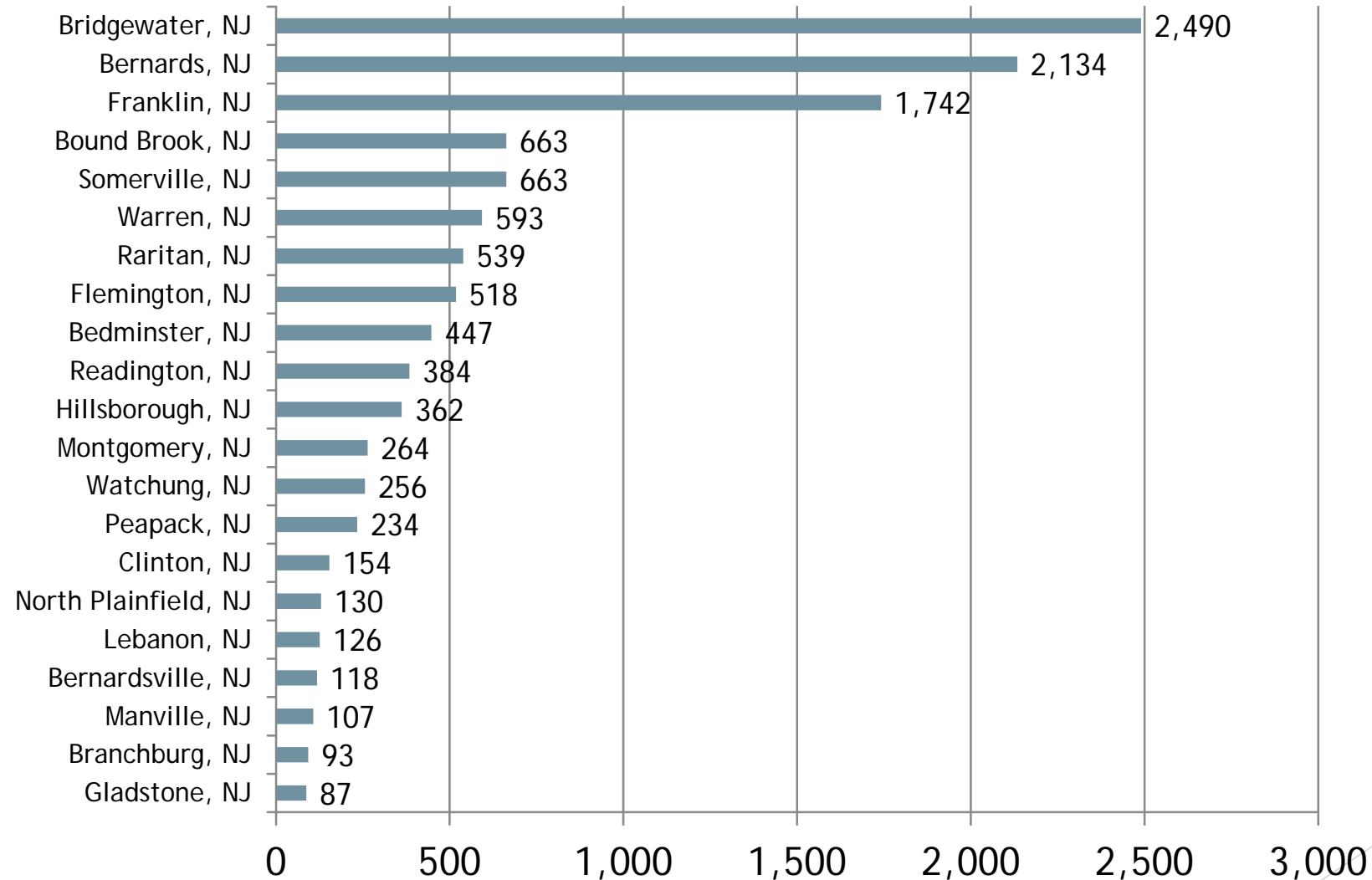
Source: U.S. Census Bureau, Center for Economic Studies

Burning Glass – Labor Insight

- ▶ The New Jersey Department of Labor and Workforce Development — through its agreement with Burning Glass Technologies — is able to provide labor market information aggregated from online employer job listings during a given time period.
- ▶ This data provides valuable insight regarding current employer demand for characteristics such as skills and educational requirements.
- ▶ Note that this data is not meant to represent all available employment opportunities, but rather should be viewed in terms of analysis of labor market demand.

Greater Raritan Cities With The Most Listings

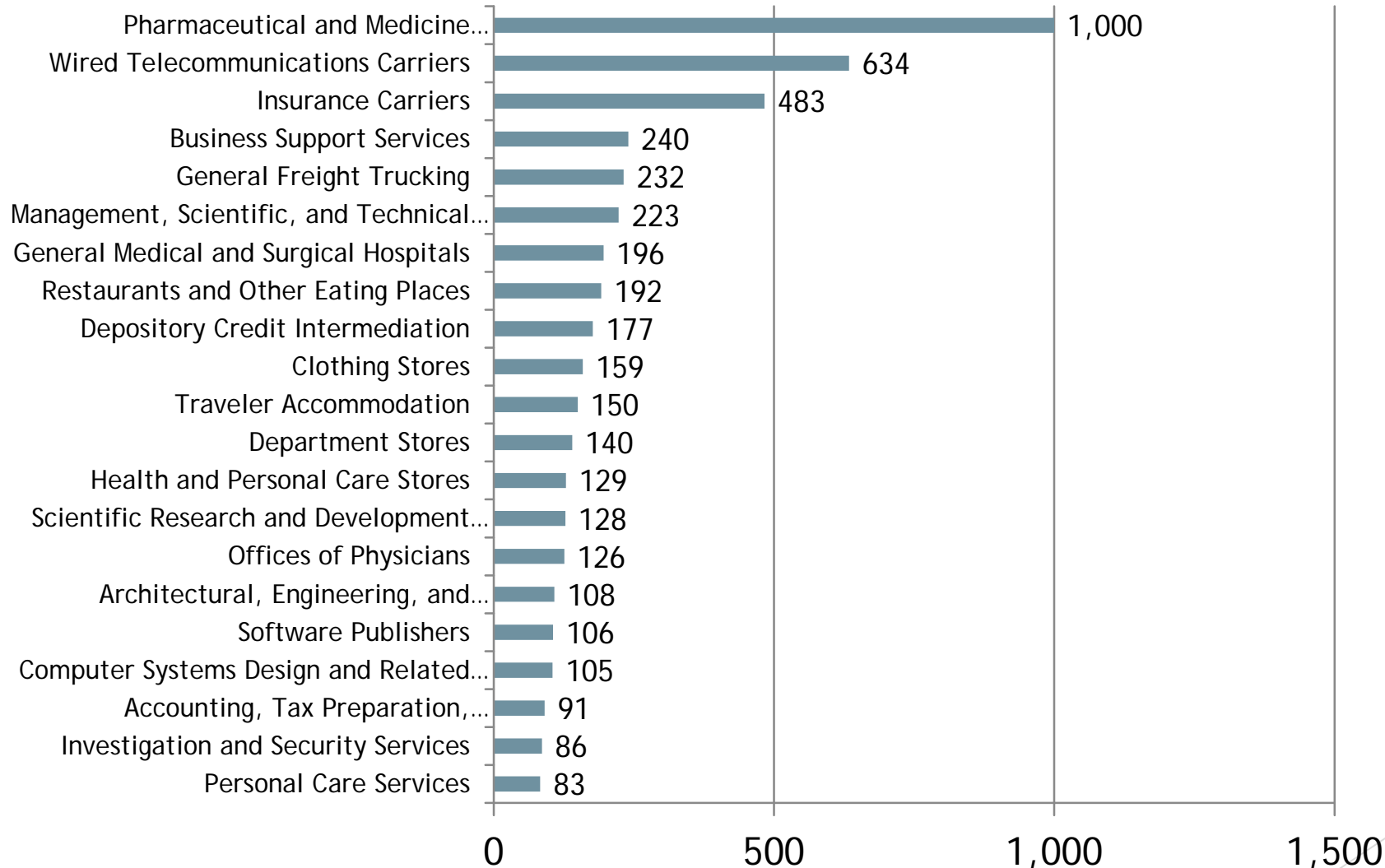
Jun. 26, 2019 - Sep. 23, 2019 (Data not available after Sep. 21, 2019)



• Source: Burning Glass Technologies Inc., Labor Insight
Prepared by New Jersey Department of Labor & Workforce Development - September, 2019

Greater Raritan Industries With The Most Listings

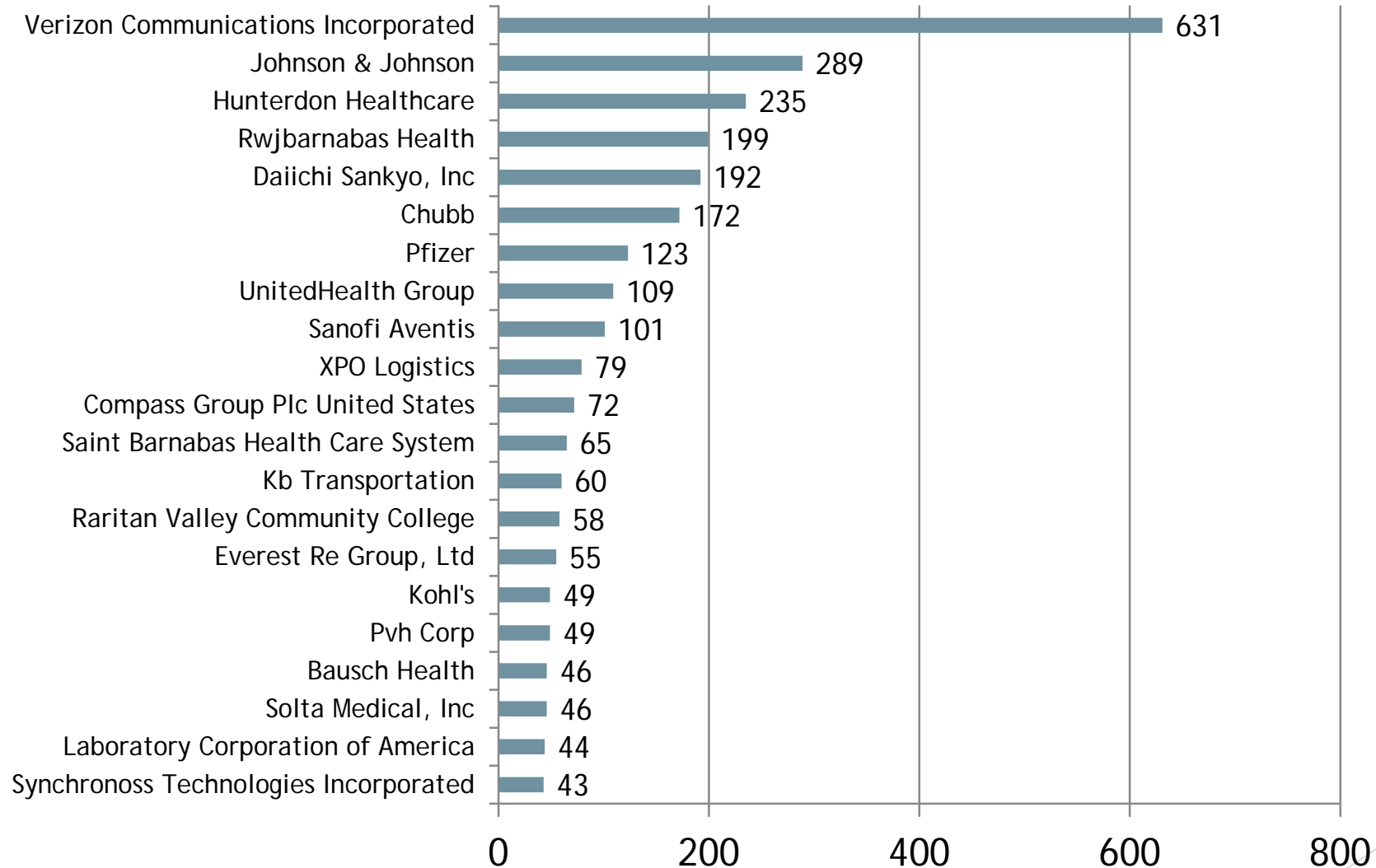
Jun. 26, 2019 - Sep. 23, 2019 (Data not available after Sep. 21, 2019)



• Source: Burning Glass Technologies Inc., Labor Insight
Prepared by New Jersey Department of Labor & Workforce Development - September, 2019

Greater Raritan Employers With The Most Listings

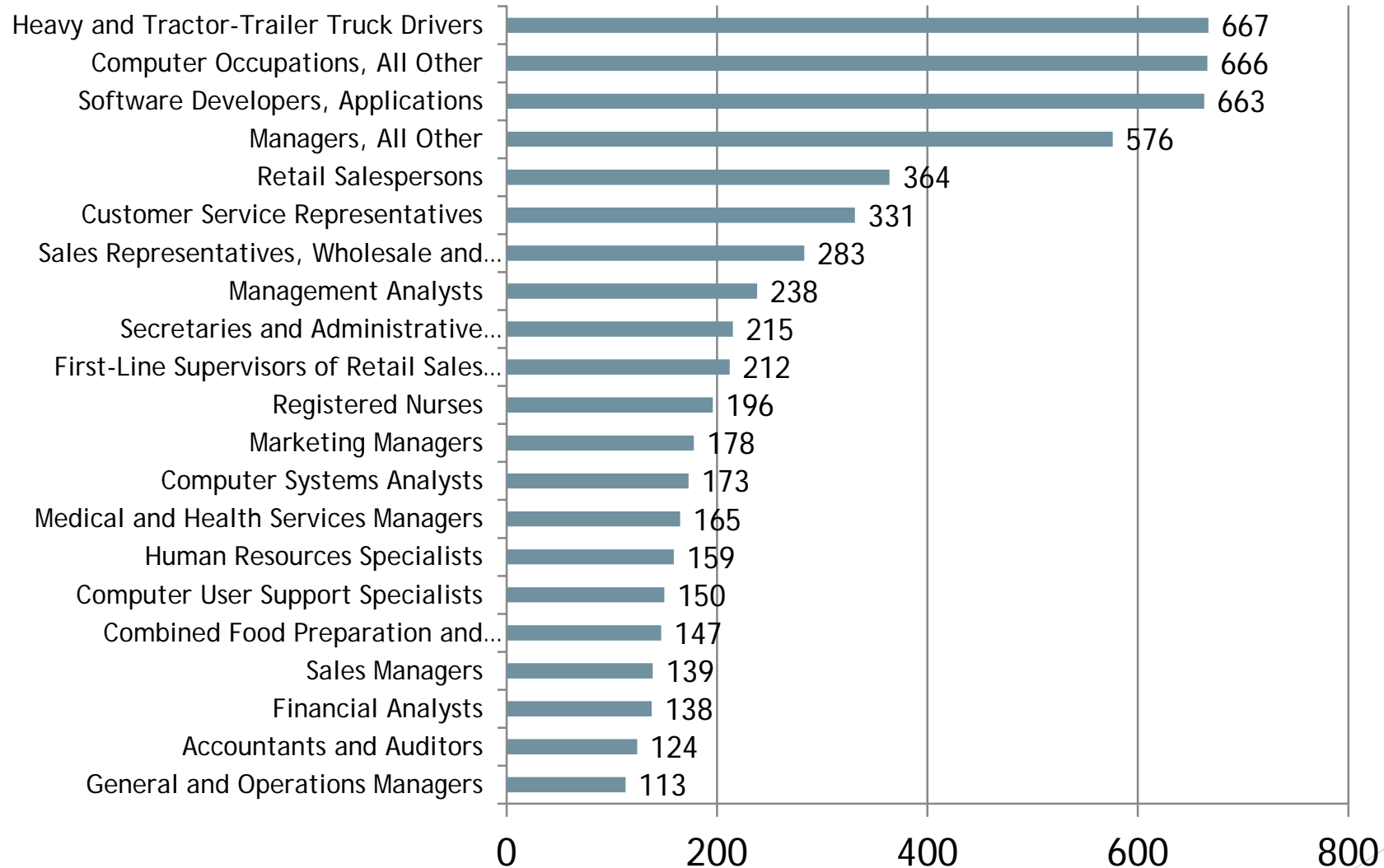
Jun. 26, 2019 - Sep. 23, 2019 (Data not available after Sep. 21, 2019)



- Source: Burning Glass Technologies Inc., Labor Insight
Prepared by New Jersey Department of Labor & Workforce Development - September, 2019

Greater Raritan Top Detailed Occupational Listings

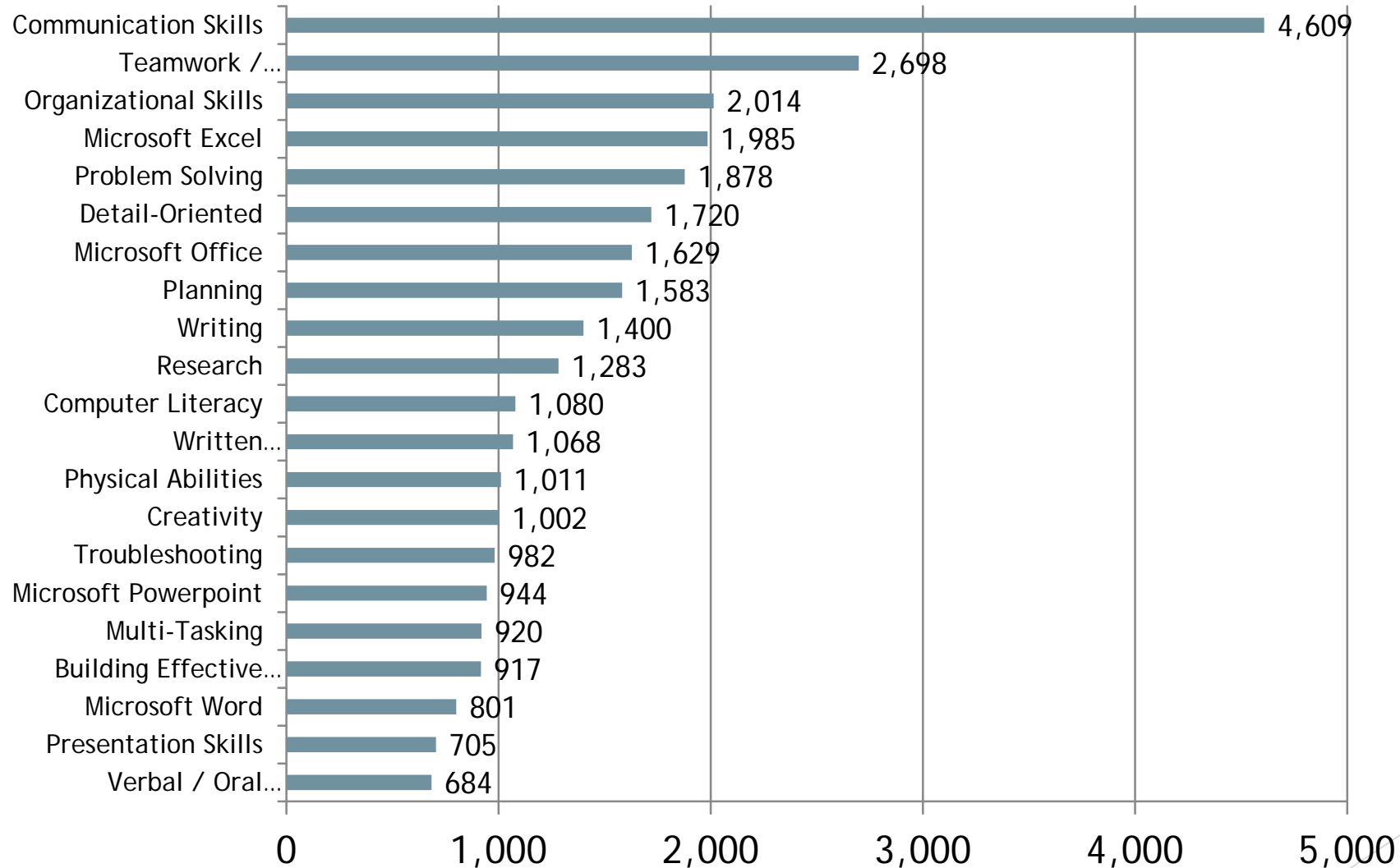
Jun. 26, 2019 - Sep. 23, 2019 (Data not available after Sep. 21, 2019)



- Source: Burning Glass Technologies Inc., Labor Insight
Prepared by New Jersey Department of Labor & Workforce Development - September, 2019

Greater Raritan Baseline Skills in Greatest Demand

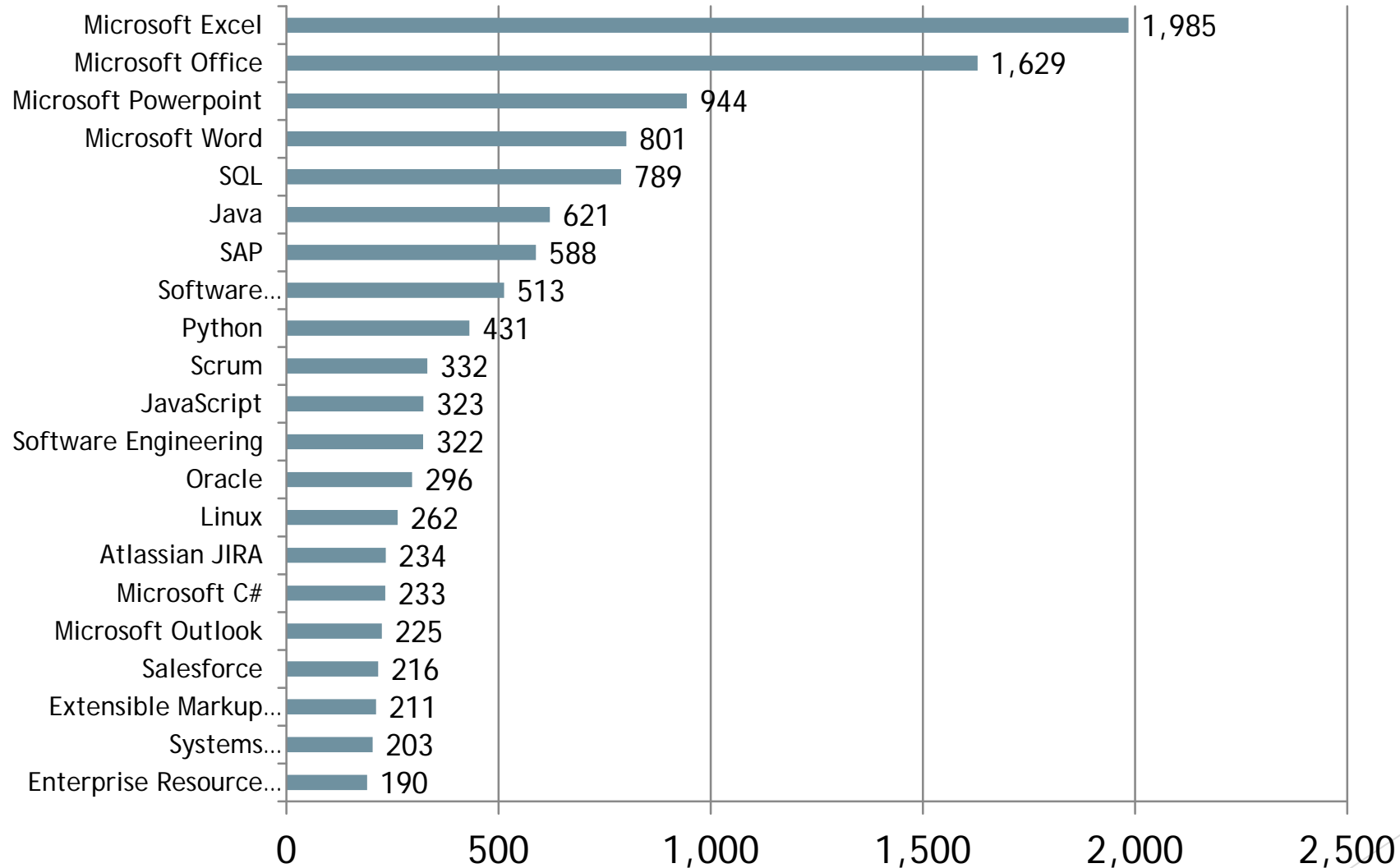
Jun. 26, 2019 - Sep. 23, 2019 (Data not available after Sep. 21, 2019)



• Source: Burning Glass Technologies Inc., Labor Insight
Prepared by New Jersey Department of Labor & Workforce Development - September, 2019

Software & Programming Skills in Greatest Demand

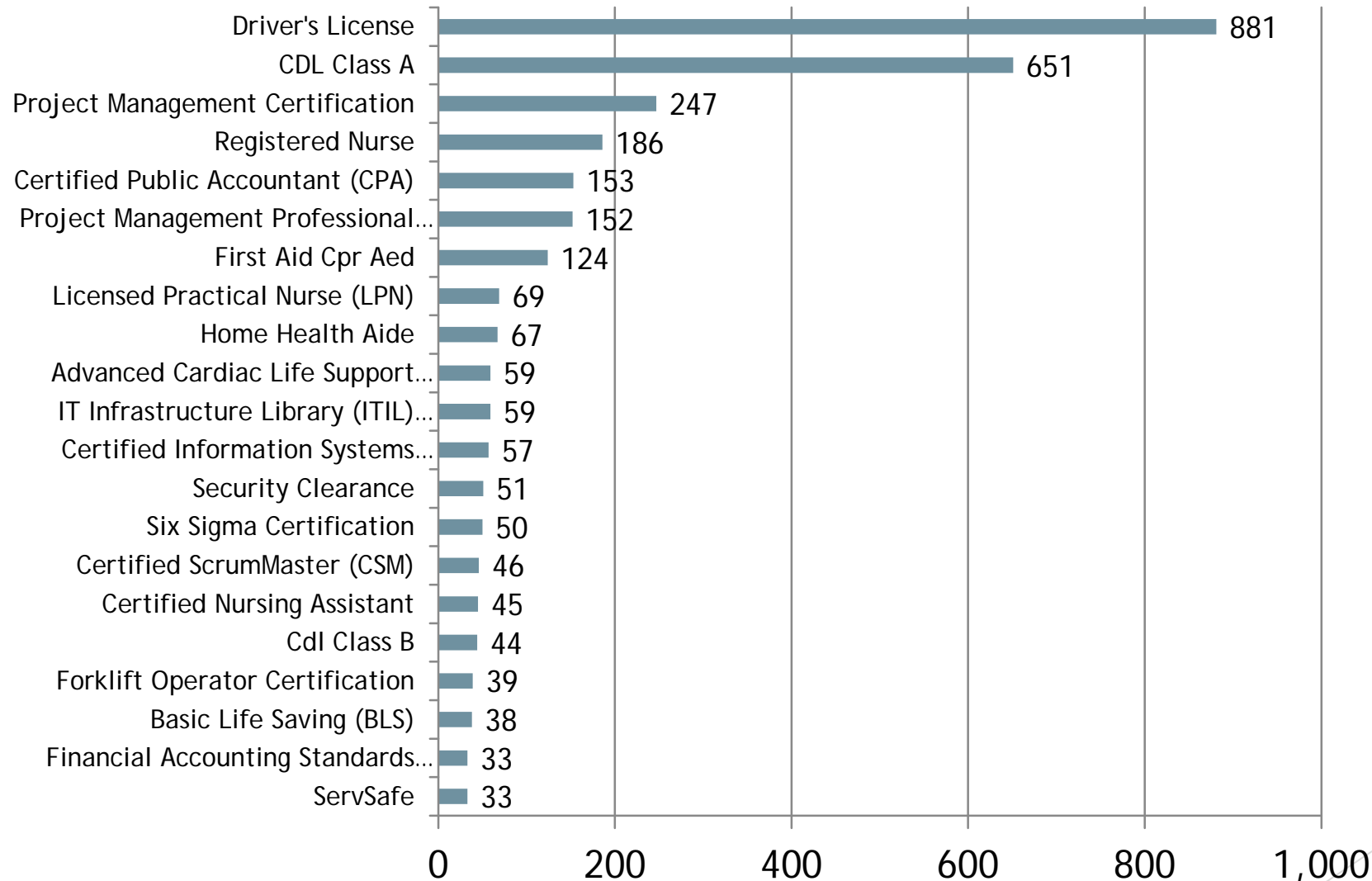
Jun. 26, 2019 - Sep. 23, 2019 (Data not available after Sep. 21, 2019)



• Source: Burning Glass Technologies Inc., Labor Insight
Prepared by New Jersey Department of Labor & Workforce Development - September, 2019

Greater Raritan Certifications in Greatest Demand

Jun. 26, 2019 - Sep. 23, 2019 (Data not available after Sep. 21, 2019)



• Source: Burning Glass Technologies Inc., Labor Insight
Prepared by New Jersey Department of Labor & Workforce Development - September, 2019

Occupational Analysis

Occupation Analysis - Computer Programmers

Save / Export...

Create, modify, and test the code, forms, and script that allow computer applications to run. Work from specifications drawn up by software developers or other individuals. May assist software developers by analyzing user needs and designing software solutions. May develop and write computer programs to store, locate, and retrieve specific documents, data, and information.

Common job titles: Programmer/Analyst, Programmer, Senior Programmer/Analyst, Will Sort, Scan, And Build Some Serious Muscle, Application Instructions

Overview

Skills Explorer

Employers & Industries

Top Locations

Related Jobs

Job Metrics

Job Postings
Last 12 Months

High Demand

173

Projected Growth
10 Years



Time to Fill

Similar to Fill

37 days

Location Quotient

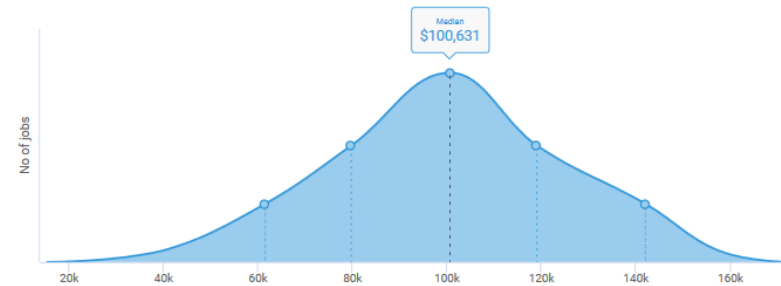


Salary

Overall

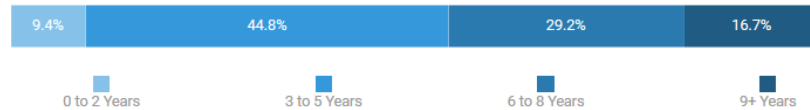
By Education

By Experience

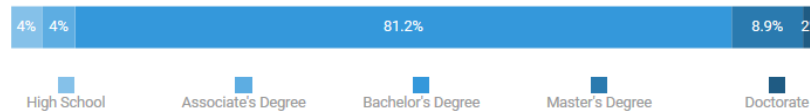


Job Qualifications

Years of Experience



Education Level



Top Skills

[Explore All Skills](#)

Specialized Skills

Java
SQL
Project Management
Extensible Markup Language (XML)
SAS
Software Development
Oracle

Baseline Skills

Communication Skills
Teamwork / Collaboration
Planning
Microsoft Excel
Problem Solving
Microsoft Office
Microsoft Powerpoint

Occupational Analysis

Occupation Analysis - Computer Programmers

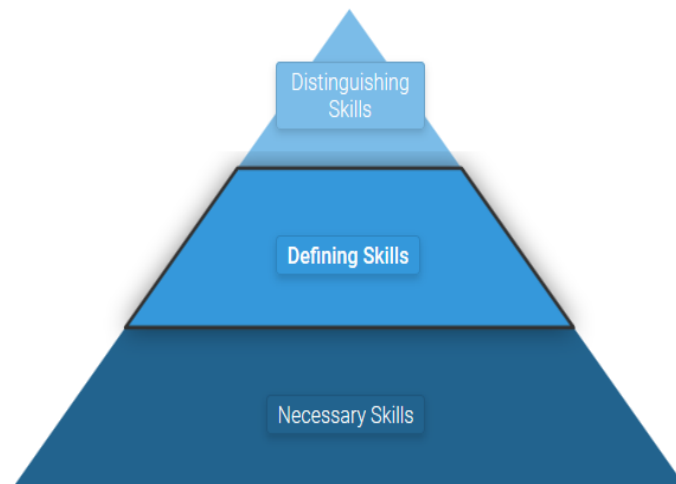
[Save / Export...](#)

Create, modify, and test the code, forms, and script that allow computer applications to run. Work from specifications drawn up by software developers or other individuals. May assist software developers by analyzing user needs and designing software solutions. May develop and write computer programs to store, locate, and retrieve specific documents, data, and information.

Common job titles: Programmer/Analyst, Programmer, Senior Programmer/Analyst, Will Sort, Scan, And Build Some Serious Muscle, Application Instructions

[Overview](#)[Skills Explorer](#)[Employers & Industries](#)[Top Locations](#)[Related Jobs](#)

Occupational Skills for Computer Programmers



Click a segment to explore more skills

An occupation's **Defining skills** represent the day-to-day tasks and responsibilities of the job. An employee needs these skills to qualify for and perform successfully in this occupation.

Top Defining skills by demand

Skill	Salary Premium	Job Postings Requesting Last 12 Months	Projected Growth 2 Years	Location Quotient
Java	✓	41	-2.2% ↘	1.3 ↗
SQL		29	-7.5% ↘	0.8 ↘
Extensible Markup Language (XML)		24	-18.8% ↘	2.8 ↗
.NET		14	-24.3% ↘	1.1 →
JavaScript		12	+4.4% ↗	0.6 ↘
SQL Server		8	-10.8% ↘	1.0 →
Python		6	+23.7% ↗	0.8 ↘

[Learn more](#) about Occupational Skill Categories.

Occupational Analysis

Occupation Analysis - Computer Programmers

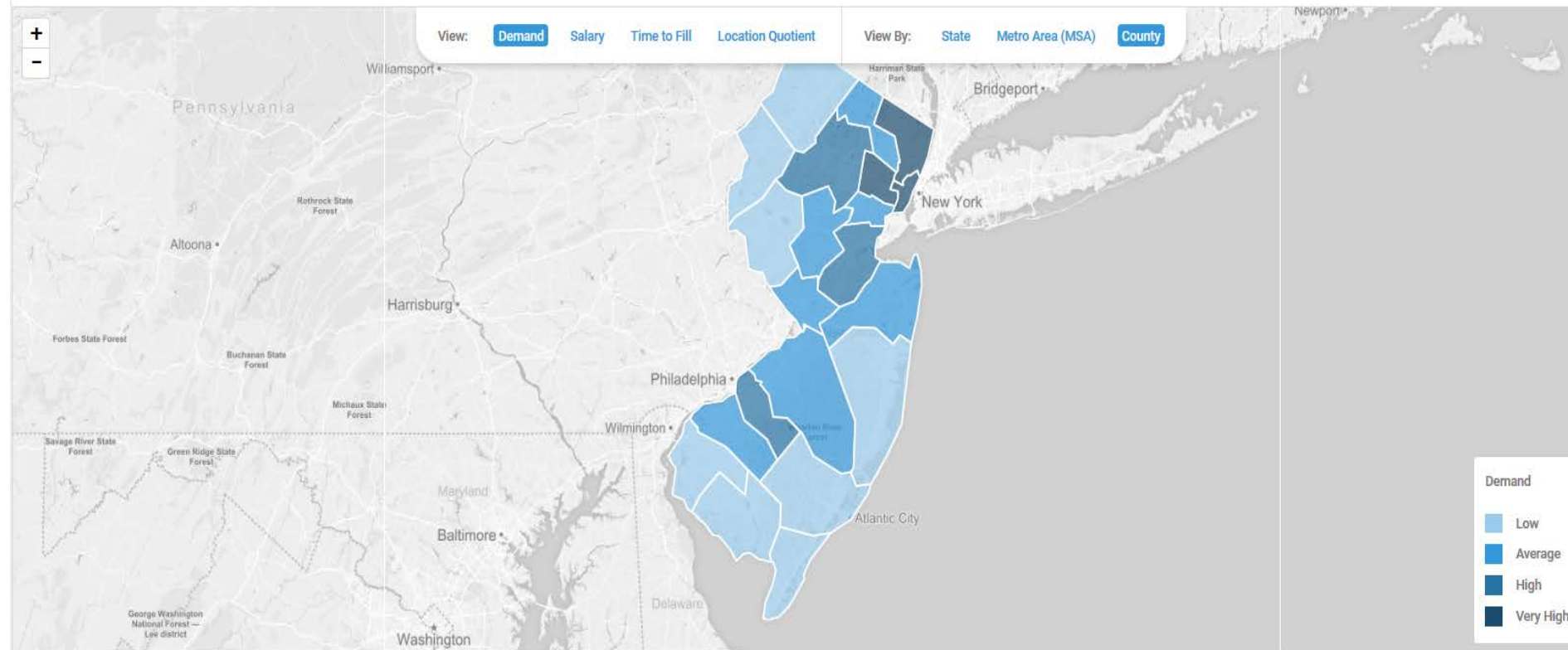
Save / Export...

Create, modify, and test the code, forms, and script that allow computer applications to run. Work from specifications drawn up by software developers or other individuals. May assist software developers by analyzing user needs and designing software solutions. May develop and write computer programs to store, locate, and retrieve specific documents, data, and information.

Common job titles: Programmer/Analyst, Programmer, Senior Programmer/Analyst, Will Sort, Scan, And Build Some Serious Muscle, Application Instructions

Overview Skills Explorer Employers & Industries **Top Locations** Related Jobs

Top Locations



Publications

Regional Reports (Labor Market Information>Publications)



Data for Decision Making Series
November 2016

Key Industries in Atlantic County, NJ

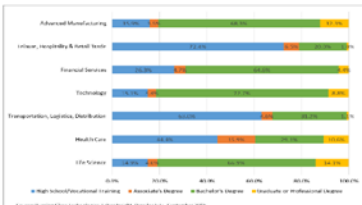
Five Dominant Industries with Hiring Needs
Accommodation and food services (5,616) and retail trade (3,097) experienced the most hiring in Atlantic County in the 3rd quarter of 2015.

Total Jobs and New Hires in Atlantic County, by Sector



Data for Decision Making Series – November 2016

Education Requirements by Industry Cluster (Statewide)



Minimum Educational requirements for all jobs – based on statewide-level data, this chart gives an indication of the level of education employers are requiring for potential job openings in the industry. This can be a useful tool for deciding which industries to target if your goal is to assist workers who have a particular level of education.

Source: Burning Glass Technologies Inc., which aggregates occupational and industry data from online employer job listings. Data is based on job listings for which educational requirements are advertised.

Industry Employment Projections for all nonfarm jobs – The projections are valuable data for identifying the potential future employment growth or decline of industries within your county. Employment refers to jobs, both full and part-time, not the number of employed persons.

Source: NJLWD, Industry and Occupational Employment Projections 2014 – 2024. The industry employment projections use the nonfarm wage survey employment definition of employment.

The primary data input is an employment time series, by industry, which goes back to 1990.

What industries are expected to have employment growth?

Atlantic County, 2014-2024 Projected Employment Change				
Industry Title (Four Digit NAICS)	2014 Jobs	2024 Jobs	Change Number	Change Percent
Total All Industries	133,530	137,055	3,525	2.6
Healthcare and Social Services	18,454	19,879	1,325	7.2
Accommodation and Food Services	40,869	42,752	883	2.2
Professional, Scientific, and Technical Services	43,399	53,888	10,489	24.2
Construction	4,296	5,539	1,243	29.2
Retail Trade	16,058	16,830	772	4.8
Administrative and Waste Services	4,380	4,780	400	9.1
Arts, Entertainment, and Recreation	1,889	2,216	327	17.3
Wholesale Trade	2,672	2,839	167	6.3
Real Estate and Rental and Leasing	1,361	1,528	167	12.3
Transportation and Warehousing	2,229	2,290	61	2.8
Management of Companies and Enterprises	846	890	44	5.2
Utilities	722	752	30	4.2
Natural Resources and Mining	20	17	-3	-15.0
Information	862	748	-114	-13.2
Other Services	5,341	5,262	-79	-1.5
Manufacturing	2,056	1,832	-224	-11.0
Finance and Insurance	2,695	2,328	-367	-13.6
Government	10,762	10,814	52	0.5
Educational Services	13,329	12,253	-1,076	-8.1

Notes: Total nonfarm employment includes self-employed and unpaid family workers. Percent changes are based on unrounded data. Source: New Jersey Department of Labor and Workforce Development.

Atlantic County is projected to add 3,525 jobs from 2014 to 2024, an increase of 2.6 percent. In comparison, the state's payroll is projected to advance by 6.5 percent. The county's healthcare and social services industry is projected to account for the majority of these new jobs (+1,395).

How to Use This Guide
This guide gives workforce and education policymakers key information about local industries to enable informed decision making.

New hires – Estimated number of workers that started a new job. This figure represents individuals who started working for an employer that they had not worked for in any other quarter over the past year and is important to consider because it indicates many job opportunities available due to rate projected by industry.

Total number of jobs held on both the last day of the year and the same employer helps you to understand which private sector industries dominate the local economy and the largest run both full and part-time.

Source: U.S. Census Bureau, Longitudinal Employer-Household Dynamics (LEHD) program. This is a State partnership program. The State partnership program provides data for existing data for supplied on work records on workers with census, survey administrative

Regional Focus: Central Jersey

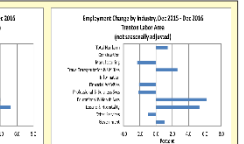
Data and analysis for the Middlesex-Monmouth-Ocean and Trenton labor areas (Mercer, Middlesex, Monmouth and Ocean counties)

Central Region Leads Statewide Job Growth

Total nonfarm employment in the Central Region reached a not seasonally adjusted



December to December Total Employment Change
New Jersey and Central Region (not seasonally adjusted)



Source: NJLWD, Current Employment Statistics

Regional Focus: North Jersey

Data and analysis for the Bergen-Hudson-Passaic and Newark labor areas (Mercer, Middlesex, Monmouth and Ocean counties)

Upward

region (Bergen-Hudson-Passaic, IBHP)

region (Bergen-Hudson-Passaic, IBHP)

region (Bergen-Hudson-Passaic, IBHP)

region (Bergen-Hudson-Passaic, IBHP)

region (Bergen-Hudson-Passaic, IBHP)

region (Bergen-Hudson-Passaic, IBHP)

region (Bergen-Hudson-Passaic, IBHP)

region (Bergen-Hudson-Passaic, IBHP)

region (Bergen-Hudson-Passaic, IBHP)

region (Bergen-Hudson-Passaic, IBHP)

region (Bergen-Hudson-Passaic, IBHP)

region (Bergen-Hudson-Passaic, IBHP)

region (Bergen-Hudson-Passaic, IBHP)

region (Bergen-Hudson-Passaic, IBHP)

region (Bergen-Hudson-Passaic, IBHP)

region (Bergen-Hudson-Passaic, IBHP)

region (Bergen-Hudson-Passaic, IBHP)

region (Bergen-Hudson-Passaic, IBHP)

region (Bergen-Hudson-Passaic, IBHP)

region (Bergen-Hudson-Passaic, IBHP)

region (Bergen-Hudson-Passaic, IBHP)

region (Bergen-Hudson-Passaic, IBHP)

region (Bergen-Hudson-Passaic, IBHP)

region (Bergen-Hudson-Passaic, IBHP)

Issue #19N Data through Dec 2016



Regional Focus: South Jersey

Data and analysis for the Atlantic City-Hammonton, Camden, Ocean City, and Vineland-Bridgeton labor areas (Atlantic, Burlington, Camden, Gloucester, Cape May, and Cumberland counties)

Regional Employment Rises over the Year

The Southern Region's not seasonally adjusted level of nonfarm payroll employment totaled an estimated 274,600 in December 2016, up by 15,100 jobs or 5.5 percent from

At the statewide level, the job growth leaders were educational and health services (+3,300 or +0.1%), information (+2,000 or +0.1%), leisure and hospitality (+400 or +0.1%), and construction (+300 or +0.1%).

At the statewide level, the job growth leaders were educational and health services (+3,300 or +0.1%), information (+2,000 or +0.1%), leisure and hospitality (+400 or +0.1%), and construction (+300 or +0.1%).

At the statewide level, the job growth leaders were educational and health services (+3,300 or +0.1%), information (+2,000 or +0.1%), leisure and hospitality (+400 or +0.1%), and construction (+300 or +0.1%).

At the statewide level, the job growth leaders were educational and health services (+3,300 or +0.1%), information (+2,000 or +0.1%), leisure and hospitality (+400 or +0.1%), and construction (+300 or +0.1%).

At the statewide level, the job growth leaders were educational and health services (+3,300 or +0.1%), information (+2,000 or +0.1%), leisure and hospitality (+400 or +0.1%), and construction (+300 or +0.1%).

At the statewide level, the job growth leaders were educational and health services (+3,300 or +0.1%), information (+2,000 or +0.1%), leisure and hospitality (+400 or +0.1%), and construction (+300 or +0.1%).

At the statewide level, the job growth leaders were educational and health services (+3,300 or +0.1%), information (+2,000 or +0.1%), leisure and hospitality (+400 or +0.1%), and construction (+300 or +0.1%).

At the statewide level, the job growth leaders were educational and health services (+3,300 or +0.1%), information (+2,000 or +0.1%), leisure and hospitality (+400 or +0.1%), and construction (+300 or +0.1%).

At the statewide level, the job growth leaders were educational and health services (+3,300 or +0.1%), information (+2,000 or +0.1%), leisure and hospitality (+400 or +0.1%), and construction (+300 or +0.1%).

At the statewide level, the job growth leaders were educational and health services (+3,300 or +0.1%), information (+2,000 or +0.1%), leisure and hospitality (+400 or +0.1%), and construction (+300 or +0.1%).

At the statewide level, the job growth leaders were educational and health services (+3,300 or +0.1%), information (+2,000 or +0.1%), leisure and hospitality (+400 or +0.1%), and construction (+300 or +0.1%).

At the statewide level, the job growth leaders were educational and health services (+3,300 or +0.1%), information (+2,000 or +0.1%), leisure and hospitality (+400 or +0.1%), and construction (+300 or +0.1%).

At the statewide level, the job growth leaders were educational and health services (+3,300 or +0.1%), information (+2,000 or +0.1%), leisure and hospitality (+400 or +0.1%), and construction (+300 or +0.1%).

At the statewide level, the job growth leaders were educational and health services (+3,300 or +0.1%), information (+2,000 or +0.1%), leisure and hospitality (+400 or +0.1%), and construction (+300 or +0.1%).

At the statewide level, the job growth leaders were educational and health services (+3,300 or +0.1%), information (+2,000 or +0.1%), leisure and hospitality (+400 or +0.1%), and construction (+300 or +0.1%).

At the statewide level, the job growth leaders were educational and health services (+3,300 or +0.1%), information (+2,000 or +0.1%), leisure and hospitality (+400 or +0.1%), and construction (+300 or +0.1%).

At the statewide level, the job growth leaders were educational and health services (+3,300 or +0.1%), information (+2,000 or +0.1%), leisure and hospitality (+400 or +0.1%), and construction (+300 or +0.1%).

At the statewide level, the job growth leaders were educational and health services (+3,300 or +0.1%), information (+2,000 or +0.1%), leisure and hospitality (+400 or +0.1%), and construction (+300 or +0.1%).

At the statewide level, the job growth leaders were educational and health services (+3,300 or +0.1%), information (+2,000 or +0.1%), leisure and hospitality (+400 or +0.1%), and construction (+300 or +0.1%).

Issue #19S Data through Dec 2016



TOP SKILLS IN DEMAND		EMPLOYERS WITH SIGNIFICANT JOB LISTING ACTIVITY	
Skills	Count	Employers	Count
Customer Service	2,899	Employers with Significant Job Listing Activity	2,899
Sales	2,789	Employers with Significant Job Listing Activity	2,789
Business Development	2,789	Employers with Significant Job Listing Activity	2,789
Marketing	2,789	Employers with Significant Job Listing Activity	2,789
Human Resources	2,789	Employers with Significant Job Listing Activity	2,789
Project Management	2,789	Employers with Significant Job Listing Activity	2,789
Software Development	2,789	Employers with Significant Job Listing Activity	2,789
Operations	2,789	Employers with Significant Job Listing Activity	2,789
Finance	2,789	Employers with Significant Job Listing Activity	2,789
Logistics	2,789	Employers with Significant Job Listing Activity	2,789

INDUSTRIES WITH THE MOST JOB LISTINGS	
Industry	Count
Healthcare and Social Services	1,914
Accommodation and Food Services	1,914
Professional, Scientific, and Technical Services	1,914
Construction	1,914
Retail Trade	1,914
Administrative and Waste Services	1,914
Arts, Entertainment, and Recreation	1,914
Wholesale Trade	1,914
Real Estate and Rental and Leasing	1,914
Transportation and Warehousing	1,914

OCCUPATIONS WITH THE MOST LISTINGS	
Occupation	Count
Sales Representative	1,249
Registered Nurse	1,249
Business Development Representative	1,249
Customer Service Representative	1,249
Project Manager	1,249
Software Developer	1,249
Operations Manager	1,249
Finance Analyst	1,249
Logistics Coordinator	1,249
Human Resources	1,249

Source: Burning Glass Technologies, Labor Insights
Prepared by New Jersey Department of Labor and Workforce Development, Division of Labor Market Information

The website content was created by a grant recipient as part of a project to improve the quality of labor market information. The content is provided as a public service and is not intended to be used for any other purpose. The content is provided as a public service and is not intended to be used for any other purpose.

To subscribe to this publication email njsdc@do.state.nj.us with "regional focus" in the subject line.

<https://www.nj.gov/labor/lpa/pub/regfocus-index.html>

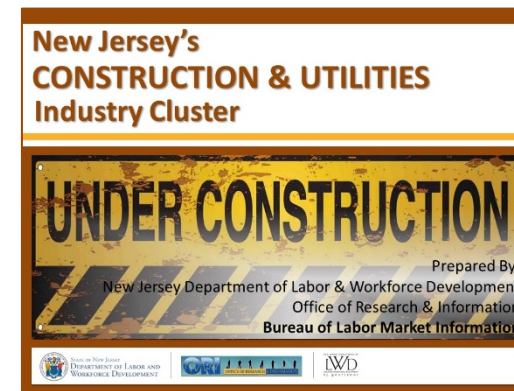
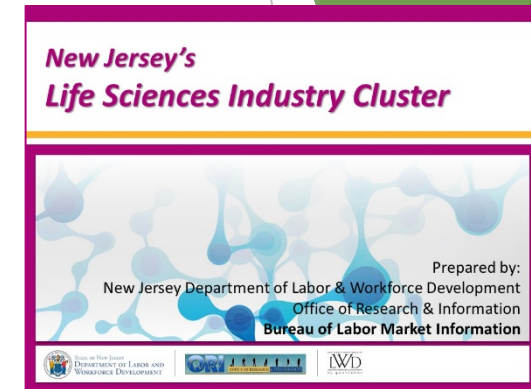
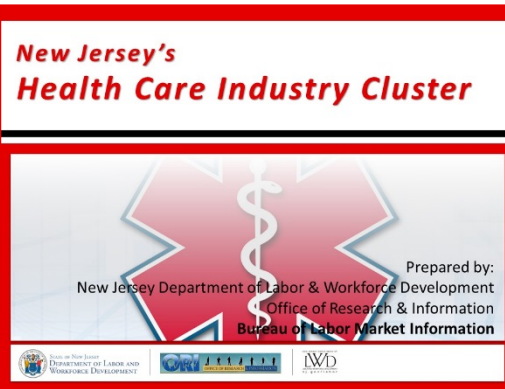


Scan with your smart phone to access the Office of Research and Information online:



Key Industry Reports

(Labor Market Information>Publications>Industry Cluster Focus)



https://www.nj.gov/labor/lpa/pub/empecon/empeconomy_index.html

Special Reports

(Labor Market Information>Publications)



Occupational Employment and Wages, 2017

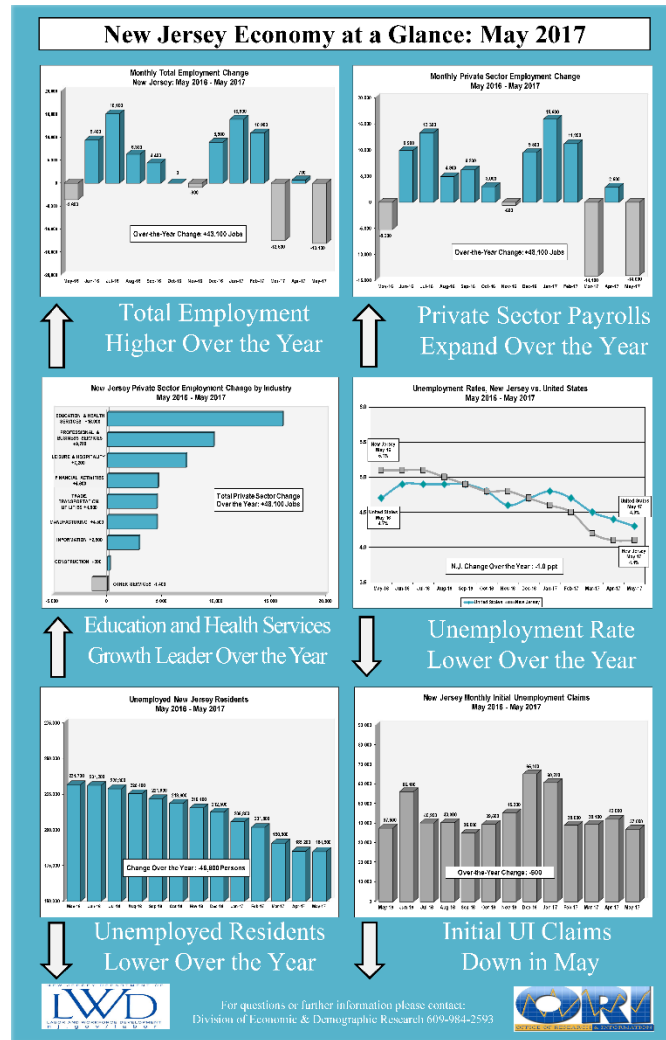
A Detailed Analysis of New Jersey's Occupational Landscape

Published January 2019



https://www.nj.gov/labor/lpa/employ/oeswage/nj_oes_wage_report.pdf

Economic Indicator Reports (Labor Market Information>Publications)



<https://www.nj.gov/labor/lpa/content/maps/lmiupdate.pdf>

https://www.nj.gov/labor/lpa/pub/ataglace_index.html

NJLWD Website

The screenshot shows the NJLWD Website homepage. At the top, there is a blue navigation bar with links for Unemployment Benefits, Temporary Disability, and Family Leave, each with a 'File Here' button and a 'Help' button. A 'Select Language' dropdown menu is also present. Below the navigation bar is a 'Disclaimer' button. On the left side, there is a sidebar menu with the following items: LWD Home, Employer Accounts, Employer Handbook, Equal Pay Act, Individuals with Disabilities, and Internships. A red arrow points to the 'Labor Market Information' item in this menu. The 'Labor Market Information' menu is highlighted with a red box and contains the following sub-items: Data Tools, Data Reports, Demographics, Employment & Wages, Find Employers, Industry & Economy, Census, Census - ACS, Publications, and Labor Demand Occupations. The main content area features a large banner for 'Occupational Employment and Wages, 2016' with a detailed analysis of New Jersey's Occupational Landscape, published in January 2018. Below the banner is a section titled 'Labor Market Information' with two columns: 'What's New' and 'Frequently Asked Questions'. The 'What's New' column includes links for Labor Market Information Update, Industry Cluster - Focus, and Regional - Focus. The 'Frequently Asked Questions' column includes links for What is NJ's Unemployment Rate?, What do jobs pay in New Jersey?, What are tomorrow's growth occupations?, How do I Subscribe to your Publications?, and ORI Labor Market Analysts. At the bottom, there is a navigation bar with links for What's New, Quick Links, Data Tools, Publications, Press Releases, Job Seekers, and A to Z.

Unemployment Benefits [File Here](#) [Help](#) Temporary Disability [File Here](#) [Help](#) Family Leave [File Here](#) [Select Language](#)

[Disclaimer](#)

- ▶ LWD Home
- ▶ Employer Accounts
- ▶ Employer Handbook
- ▶ Equal Pay Act
- ▶ Individuals with Disabilities
- ▶ Internships
- Labor Market Information**
 - ▶ Data Tools
 - ▶ Data Reports
 - ▶ Demographics
 - ▶ Employment & Wages
 - ▶ Find Employers
 - ▶ Industry & Economy
 - ▶ Census
 - ▶ Census - ACS
 - ▶ Publications
 - ▶ Labor Demand Occupations

Occupational Employment and Wages, 2016

A Detailed Analysis of New Jersey's Occupational Landscape
Published January 2018

Labor Market Information

What's New

Labor Market Information Update
Key Monthly LMI Indicators

Industry Cluster - Focus
Key NJ Industry Studies

Regional - Focus
North, Central & South

Frequently Asked Questions

What is NJ's Unemployment Rate?

What do jobs pay in New Jersey?

What are tomorrow's growth occupations?

How do I Subscribe to your Publications?

ORI Labor Market Analysts

Occupational Employment and Wages, 2016
- Provides a general overview of NJ's labor market and key industry sectors

[1](#) [2](#) [3](#) [4](#) [5](#) [6](#)

[What's New](#) [Quick Links](#) [Data Tools](#) [Publications](#) [Press Releases](#) [Job Seekers](#) [A to Z](#)

Labor Market Analysts

Contact Information

DIVISION OF ECONOMIC & DEMOGRAPHIC RESEARCH BUREAU OF LABOR MARKET INFORMATION			
JoAnne Caramelo Supervisor (609) 292-2582 JoAnne.Caramelo@dol.nj.gov	Trenton Labor Building 5 th Floor, Post Office Box 057, NJ 08625-0057 Fax: (609) 633-9240	Jason Timian Supervisor (609) 633-0553 Jason.Timian@dol.nj.gov	
INDUSTRY/ FIELD ANALYSTS			
Advanced Manufacturing <i>Jason Timian</i> (609) 633-0553 Jason.Timian@dol.nj.gov	Life Sciences <i>Alex Ancianis</i> (609) 984-9683 Alex.Ancianis@dol.nj.gov	Construction & Utilities <i>Michelle Kolpak</i> (609) 633-1423 Michelle.Kolpak@dol.nj.gov	Leisure, Hospitality and Retail <i>Michael J. Dugan</i> (609) 633-6425 Michael.Dugan@dol.nj.gov
Finance <i>Michael Valeriano</i> (609) 984-5952 Michael.Valeriano@dol.nj.gov	Health Care <i>Brandon Schoonover</i> (609) 292-7281 Brandon.Schoonover@dol.state.nj.us	Transportation/Logistics Distribution <i>John Ehret</i> (609) 292-2742 John.Ehret@dol.nj.gov	Technology <i>Edwin Vallejo</i> (609) 633-1420 Edwin.Vallejo@dol.nj.gov

<https://www.nj.gov/labor/lpa/content/labormktanalysts.html>